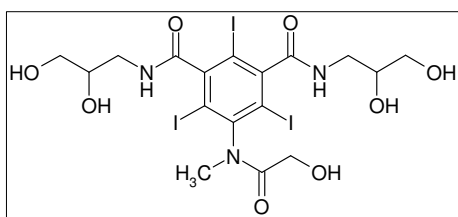


Iodinated X-ray Contrast Media (ICMs) in waste water:

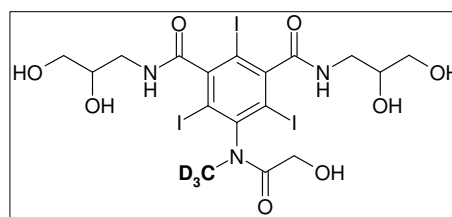
Iodinated X-ray Contrast Media (ICMs) are designed to be stable against the human metabolism. However, they also pass through the municipal wastewater system, and are frequently found in wastewater treatment plant effluents and in the receiving surface waters.

ICMs themselves do not likely impose a high risk in humans due to the low toxicity, but the formation and relevance of a number of unidentified degradation products is unknown.

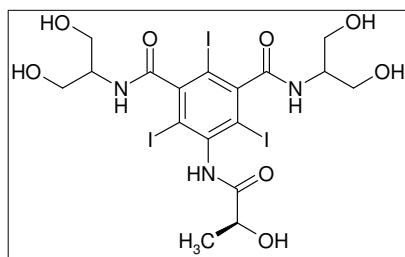
Chiron now offers a set of native and labelled Iodinated X-ray Contrast Media for HPLC-MS analysis.



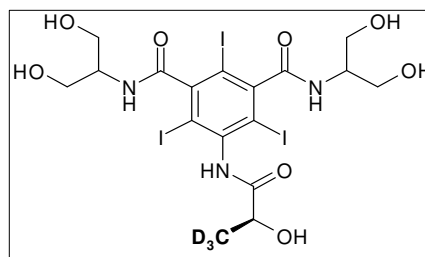
8931.16 Iomeprol



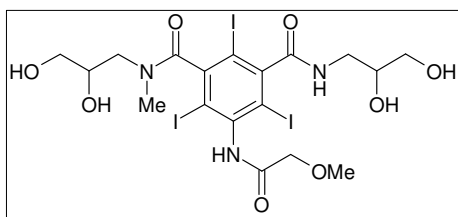
8932.16 Iomeprol-d3



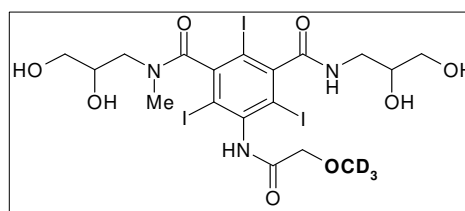
8928.17 Iopamidol



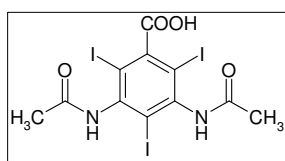
8927.17 Iopamidol-d3



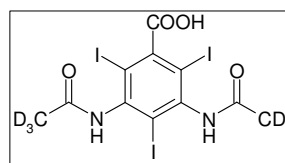
8929.18 Iopromide



8930.18 Iopromide-d3



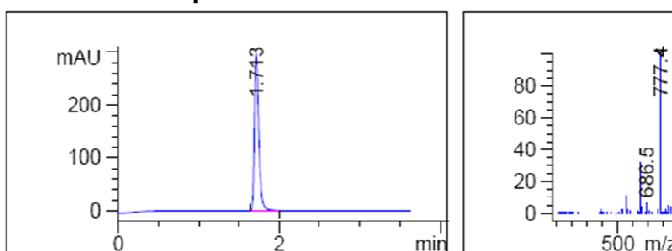
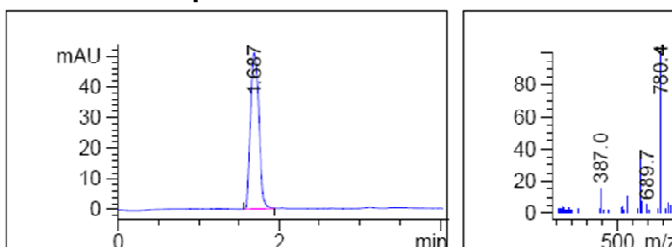
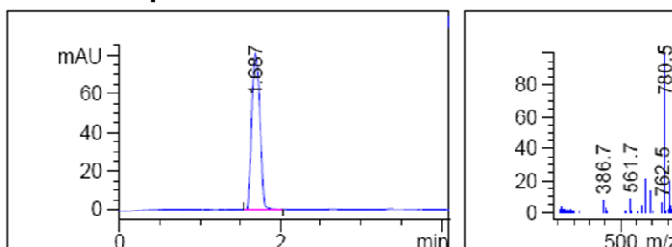
8933.11 Amidotrizoic acid



8934.11 Amidotrizoic acid-d6



	Iomeprol	
8931.16-100-ME	Iomeprol	100µg/mL in Methanol
8932.16-100-ME	Iomeprol-d3	100µg/mL in Methanol
	Iopamidol	
8928.17-100-ME	Iopamidol	100µg/mL in Methanol
8927.17-100-ME	Iopamidol-d3	100µg/mL in Methanol
	Iopromide	
8929.18-100-W	Iopromide	100µg/mL in Water
8930.18-100-W	Iopromide-d3	100µg/mL in Water
	Amidotrizoic acid	
8933.11-100-ME	Amidotrizoic acid	100µg/mL in Methanol
8934.11-100-ME	Amidotrizoic acid-d6	100µg/mL in Methanol
9426.8-Kit	ICM-Kit	Includes all items above
	Mixes	
S-4602-100-ME	X-ray contrast media mixture: Iomeprol Iopamidol, Iopromide and Amidotrizoic acid	100µg each/mL in Methanol

8931.16 Iomeprol**8932.16 Iomeprol-d3****8927.17 Iopamidol-d3****8930.18 Iopromide-d3**