

NEW! Alltech® 3300 ELSD

From the Leader in Evaporative Light Scattering Detection



sensitive

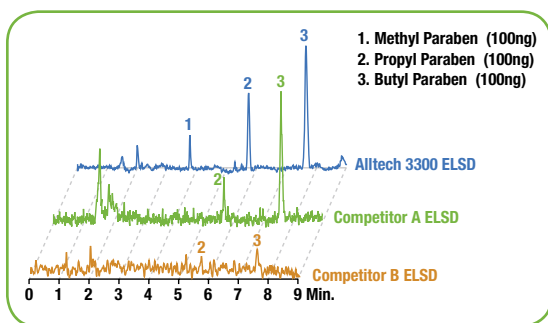
- Low noise and excellent baseline stability
- Low nanogram detection limits

simple

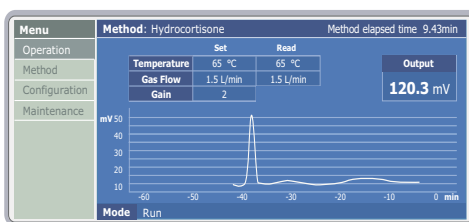
- Step-by-step method wizard automates detector setup
- Easy access to parts requiring cleaning or maintenance

small

- Small footprint minimizes bench space requirements
11.6" (29.5cm) H
10.3" (26.2cm) W
19.5" (49.5cm) D



The Alltech 3300 ELSD is the most sensitive ELSD available



Microsoft® Windows® based user interface available in seven different languages

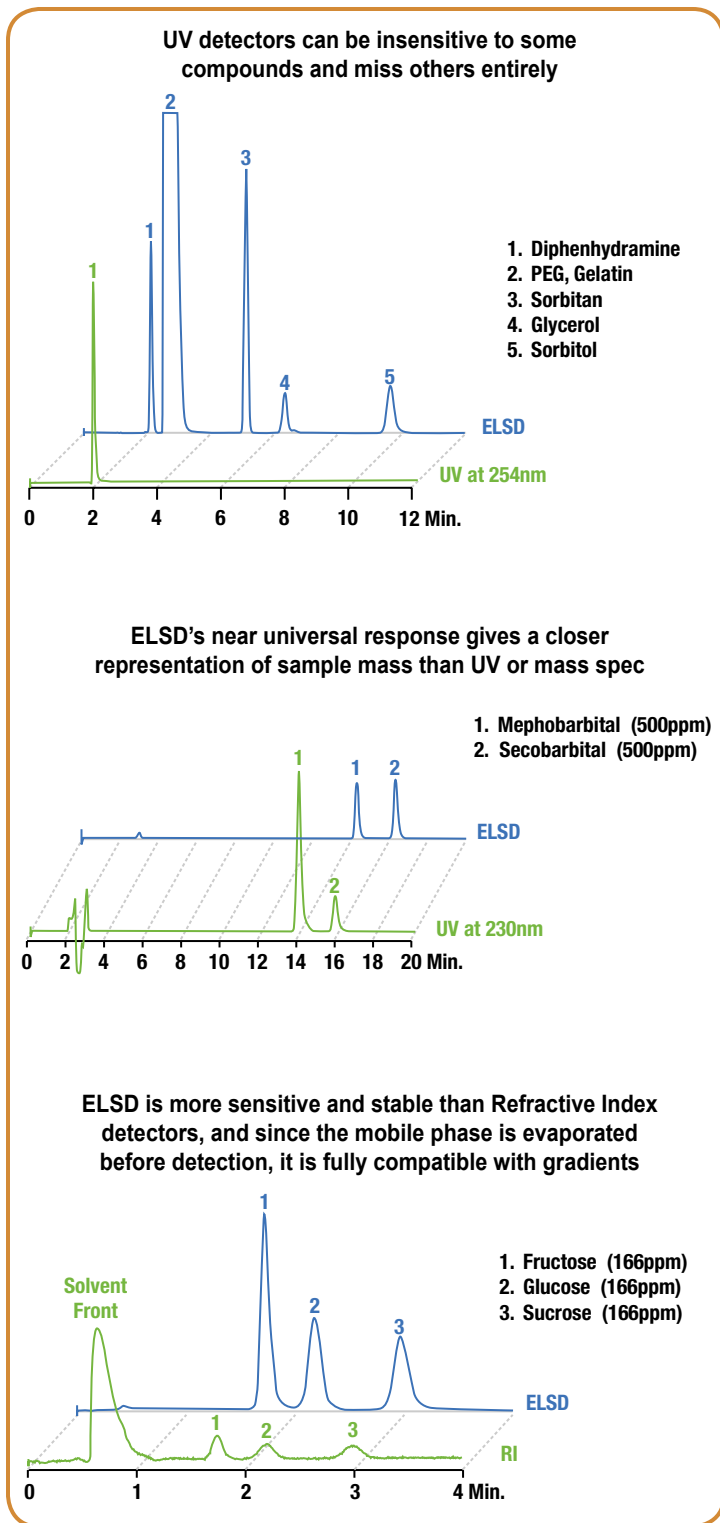


Easily integrates with any HPLC system

As a stand-alone detector or a powerful complement to UV or Mass Spec, ELSD's high sensitivity and universal detection method are ideal for any non-volatile compound.

Full IQ/OQ/PQ protocols included with each ELSD

The 3300 ELSD is easy to integrate into a qualified HPLC system. It is thoroughly tested before shipment and calibration and performance documents are included with each instrument. Detailed IQ/OQ/PQ procedures are included with the detector to help you perform your own qualification or one of our service engineers can do it for you.



Alltech® 3300 ELSD Specifications

Light Source:	Laser diode with collimating optics, 650nm, 30mW output, class IIIB
Detector Element:	Silicon photodiode
Temperature Range:	Ambient to 120°C in 1°C increments
Nebulizer Gas:	Nitrogen preferred; Calibrated to 4.0 L/min
Inlet Pressure:	60 – 80 psig
Typical Operating Range:	1.0 – 2.0 L/min
Flow Control:	Digital Mass Flow Control
Mobile Phase Flow Rate:	To 3.0 mL/min
Analog Output:	1V or 10mV full scale
Communications:	<i>Inputs:</i> TTL/contact closure for auto zero, gas shutoff, start, and standby <i>Outputs:</i> Contact Closure for pump shutdown in error conditions, general events <i>Data Ports:</i> USB, RS232, Ethernet
User Interface:	Full color Microsoft® Windows® based Graphical LCD with alphanumeric keypad
Power Requirements:	120/240V, 50/60 Hz
Dimensions:	11.6" H x 10.3" W x 19.5" D (29.5 cm H x 26.2cm W x 49.5cm D)
Weight:	30 lbs (16 Kg)
IEC/FDA Classification:	Class 1 Laser Product; Complies with 21 CFR Subpart J
Manufacturing Standards:	Meets all applicable safety and EMC certifications; CE, UL, and CSA certified
Warranty:	1 year parts and labor

Alltech 3300 ELSD*

DESCRIPTION	PART NO.
120V	5135834
240V	5135835

*Patent Pending

Services for the Alltech 3300 ELSD

DESCRIPTION	PART NO.
Installation and Training	INSTALL
Qualification	
IQ/OQ at Customer Site	Q330010
PQ at Customer Site	Q330020
IQ/OQ/PQ at Customer Site	Q330030

ALLTECH®, FLEXIT™, GROM™, JONES CHROMATOGRAPHY™, MODCOL®, and VYDAC® are trademarks of Alltech Associates, Inc. DAVISIL®, DAVISON®, GRACE®, and GRACE DAVISON® are registered trademarks of W. R. Grace & Co.-Conn. MICROSOFT® and WINDOWS® are trademarks of Microsoft Corporation. This trademark list has been compiled using available published information as of the publication date of this brochure and may not accurately reflect current trademark ownership.

Visit www.elsd.com to learn more!

sensitive

simple

small

GRACE

2051 Waukegan Road • Deerfield, IL 60015 • Tel: 847-948-8600 • Fax: 847-948-1078 • www.discoverysciences.com