

## Alltima™ HP HILIC Columns

**Polar compounds have never looked so good!**

**NEW!**

- Superior retention of highly polar compounds with small amounts of water
- Increased sensitivity and lower detection limits with LC/MS

Hydrophilic Interaction Chromatography is ideal for separating and retaining very polar compounds that may not retain on traditional reversed-phase packings. In addition, HILIC columns retain highly polar compounds with only small amounts of water, increasing sensitivity with LC/MS techniques.

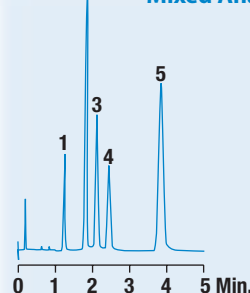


Alltech  
Only

### ALLTIMA™ HP HILIC HPLC COLUMNS

PACKING	FORMAT	I.D. X LENGTH	PART No.	PRICE
<b>1.5µm</b>	Expedite™ MS	2.1 x 20mm	<b>86471</b>	
	Expedite™ MS	4.6 x 20mm	<b>86472</b>	
	Rocket™	7 x 33mm	<b>86467</b>	
	Rocket™	7 x 53mm	<b>86468</b>	
<b>3µm</b>	Expedite™ MS	2.1 x 10mm	<b>86473</b>	
	Expedite™ MS	2.1 x 20mm	<b>86475</b>	
	LC/MS	2.1 x 50mm	<b>86461</b>	
	LC/MS	2.1 x 150mm	<b>86463</b>	
	Expedite™ MS	4.6 x 10mm	<b>86474</b>	
	Expedite™ MS	4.6 x 20mm	<b>86476</b>	
	Analytical	4.6 x 50mm	<b>86460</b>	
	Analytical	4.6 x 150mm	<b>86462</b>	
	Rocket™	7 x 33mm	<b>86469</b>	
	Rocket™	7 x 53mm	<b>86470</b>	
<b>5µm</b>	LC/MS	2.1 x 150mm	<b>86465</b>	
	Analytical	4.6 x 150mm	<b>86464</b>	
	Analytical	4.6 x 250mm	<b>86466</b>	

### Mixed Analyte HILIC



CHROM  
10461

1. Toluene
2. Hydantoin
3. Uracil
4. Caffeine
5. Allantoin

**Column:** Alltima™ HP HILIC, 5µm, 4.6 x 150mm  
(Part No. **86464**)  
**Mobile Phase:** Acetonitrile:0.10M Ammonium  
Formate, pH 3.0 (95:5)  
**Flow Rate:** 1.0mL/min  
**Detector:** UV at 205nm

*Alternate selectivity compared to reversed-phase columns allows more separation possibilities.*

### ALLTIMA™ HP GUARD CARTRIDGES

PACKING	I.D. X LENGTH	QTY	PART No.	PRICE
<b>HILIC</b>	2.1 x 7.5mm	3	<b>86479</b>	
	4.6 x 7.5mm	3	<b>86480</b>	
<b>All-Guard™ Cartridge Holder (Includes Direct-Connect™ Column Coupler)</b>			ea	<b>80101</b>

\*All-Guard™ Holder required



See our new catalog for a complete line of HILIC products.



**Q: What is HILIC?**

**A:** Hydrophilic Interaction Chromatography is a variation of normal phase chromatography. HILIC separates compounds by passing a mostly organic mobile phase over a highly polar stationary phase. Analytes elute in order of increasing polarity -- the opposite of traditional reversed-phase chromatography.

Alltima™ HP HILIC is a non-bonded high-purity silica optimized for HILIC separations. Silica functions as a HILIC packing when small amounts of water are present in the mobile phase. The water creates a layer over the surface of the silica that interacts with polar analytes. Increasing the amount of water will elute analytes more quickly. With very small amounts of water, HILIC is an ideal choice for LC/MS applications.

*Can we help with your chromatography questions? Email us at [tech\\_service@alltechemail.com](mailto:tech_service@alltechemail.com)*