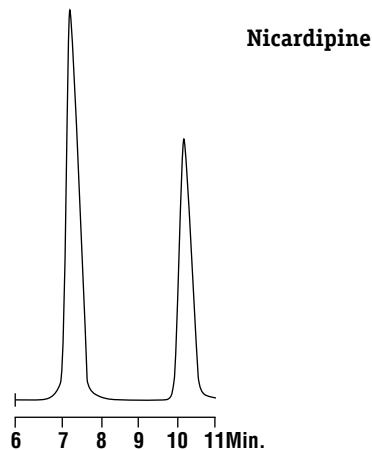


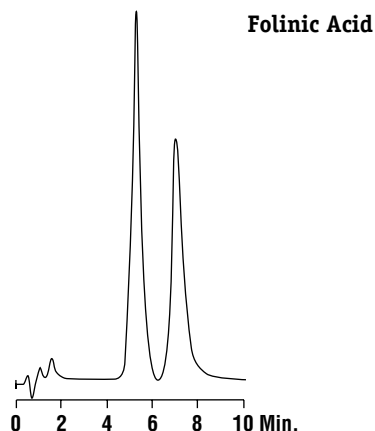
CHROM-9126

Column: Astec Chirobiotic™ V, 250 x 4.6mm
Mobile Phase: Ethanol:20mM NH₄NO₃, pH 4 (90:10)
Flowrate: 2.0mL/min
Detector: UV at 265nm



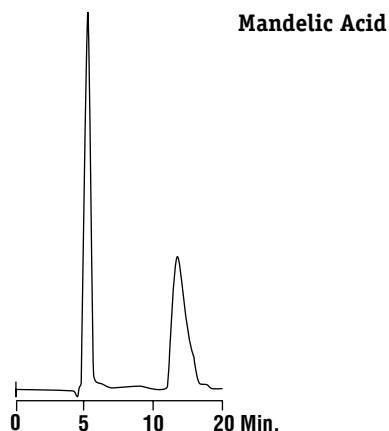
CHROM-9127

Column: Astec Chirobiotic™ V, 250 x 4.6mm
Mobile Phase: Methanol:Acetic Acid:TEA (99.97:0.02:0.01)
Flowrate: 1.0mL/min
Detector: UV at 254nm



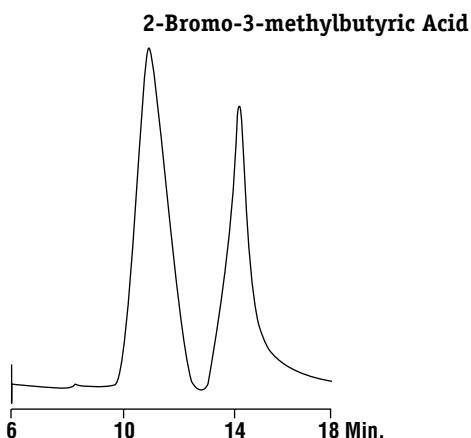
CHROM-9128

Column: Astec Chirobiotic™ T, 250 x 4.6mm
Mobile Phase: Ethanol:1% TEAA pH 4.5 (50:50)
Flowrate: 1.0mL/min
Detector: UV at 254nm



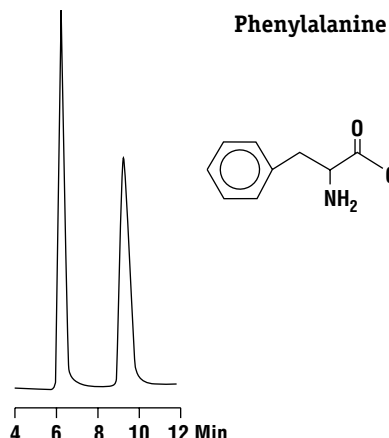
CHROM-9129

Column: Astec Chirobiotic™ R, 250 x 4.6mm
Mobile Phase: Methanol:Acetic Acid:TEA (99.8:0.1:0.1)
Flowrate: 1.5mL/min
Detector: UV at 230nm



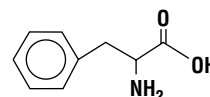
CHROM-9130

Column: Astec Chirobiotic™ R, 250 x 4.6mm
Mobile Phase: Ethanol:Hexane:Acetic Acid:TEA (60:40:0.02:0.05)
Flowrate: 1.0mL/min
Detector: UV at 230nm



CHROM-8770

Column: Astec Chirobiotic™ T
Mobile Phase: Ethanol:Water (80:20)
Flowrate: 1.0mL/min
Detector: UV at 210nm



Contact your Alltech office or distributor for current or local prices.

© Copyright 2000 Alltech Associates, Inc.