



LoGiCal[®] and Cerilliant[®]

Two independent sources

Reference materials

2017

LGC Quality
ISO 9001
ISO/IEC 17025
ISO Guide 34
GMP/GLP
ISO 13485
ISO/IEC 17043



Reference standards from two independent **ISO Guide 34** reference material producers: **LoGiCal®** and **Cerilliant®** reference materials.

LGC — a global leader in measurement standards, reference materials, laboratory services and proficiency testing.

With 2,600 professionals working in 21 countries, our analytical measurement and quality control services are second-to-none.

As the global leader, we provide the widest range of reference materials available from any single supplier.

We can provide you with reference standards from two independent ISO Guide 34 reference material producers; our own manufactured the LoGiCal® range of drug and metabolite standards and Cerilliant® portfolio of reference materials. Ordering both brands from a single source will save you time and reduce your paperwork as you will need only one import license or documentation set.

When you make a decision using our resources, you can be sure it's based on precise, robust data. And that together, we're creating fairer, safer, more confident societies worldwide.

lgcstandards.com

Our LoGiCal range, produced in LGC's laboratories in Germany, offers you a wide selection of drugs of abuse, prescription drugs, metabolites, and stable isotope labelled reference materials. The products are ISO Guide 34 certified solutions and DEA exempt where appropriate. Each product is accompanied by a comprehensive certificate of analysis (CoA). Cerilliant's quality credentials also include accreditations to ISO Guide 34, ISO/IEC 17025 and certification to ISO 13485.

Making it easy for you.

LGC has brought together this listing to make it simple to order two independent sources of reference materials from one supplier, simplifying ordering and satisfying your accreditation needs.

Certificate of analysis explained

All **LoGiCal**[®] reference materials are accompanied by comprehensive certificates of analysis. These provide a full description of the material to which they relate, and summarise the analyses undertaken during the characterisation process.

Our certificates of analysis are prepared in accordance with ISO Guide 31, which specifies the requirements for the description of reference materials and the contents of certificates and labels.

Current examples of our certificates of analysis for all products in the LoGiCal range are openly available via the lgcstandards.com website on the relevant product pages.

1 Product name

Including concentration and solvent, where relevant.

2 CAS number

The unique identifier assigned by the Chemical Abstracts Service.

3 Molecular weight and molecular formula

If the neat material is in salt form these parameters are for the salt not free base.

4 Volume per ampoule

All are overfilled to ensure the minimum stated is recoverable.

5 Expiry date

Our expiry dates are determined by real time and accelerated stability testing. **NOTE 3**

6 Quality bar

Quality accreditation under which that specific material was produced, not LGC's full scope of quality accreditation.

7 Catalogue number

LGCAMP prefix for solutions and LGCFOR for powders.

8 Chemical structure

Indicating exact position of isotopic labels and freely downloadable.

9 Long term storage

The minimum specified storage requirements and those under which real time stability testing is performed. **NOTE 1**

10 Uncertainty

The statistical parameter that is used to describe the possible fluctuation in concentration. **NOTE 2**

11 Concentration

Based on material weighings and purity factor (assay of the neat material). **NOTE 4**

The NOTES are explained on page 6.

Our certificates of analysis are typically 5-10 pages long depending on the presentation of the reference materials. The first pages, described above, summarise the analytical data that follows.



Certificate of Analysis

Reference Material - Primary Standard

- 1 Product Name: Amitriptyline Hydrochloride 1.0 mg/ml in Methanol (as free base)

Catalogue Number: LGCAMP0062.00-01 7

Lot Number: 50257

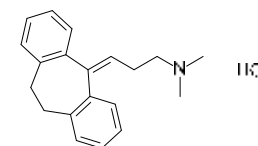
- 2 CAS Number: 549-18-8

- 3 Molecular Formula: C₂₀H₂₃N HCl

Molecular Weight: 313.86

Solvent: Methanol

- 4 Volume per Ampoule: Not less than 1 ml ¹



Long-term Storage: 2 to 8 °C, dark 9

- 5 Expiry Date: May-2019

Intended Use: The primary aim of this material is for identification, calibration and quantification.

Component	Concentration ("free base")	Uncertainty
see product name	1.000 mg/ml ²	U = 0.005 mg/ml ³
Uncertainty of the concentration is expressed as an expanded uncertainty in accordance with ISO 17025 and Guide 34 at the about 95 % level of confidence using a coverage factor of k = 2 and has been calculated by statistical analysis of our production system and incorporates uncertainty of the purity, material density and balance and weighing technique. Concentration based on material weighings and material purity factor (assay of the neat material).		

The solution's concentration and homogeneity are verified by independent method.

LGC certifies that this standard meets the specification stated in this certificate and warrants this product to meet the stated acceptance criteria through the retest date when stored unopened as recommended. Product should be used shortly after opening to avoid concentration changes due to evaporation. Warranty does not apply to ampoules stored after opening.

Release Date:
Luckenwalde, June 2014

Signed:

Dr. Sabine Schröder
Unit for Reference Materials

¹ Ampoules are overfilled to ensure a minimum 1 ml volume fill. We advise laboratories to use measured volumes of this standard solution before diluting to the desired concentration.

² The value is based on the results of analytical techniques, which calibration and verification was carried out with standards traceable to SI-units. The value is expressed on a "free base" basis.

The concentration with its uncertainty is valid in the range between 19 °C and 25 °C.

The identity is verified by data from international scientific literature. Gravimetrically prepared using qualified balances calibrated annually by accredited calibration service. Calibration verification performed daily prior to use utilizing weights traceable to SI via other mass standards.

³ The uncertainty "U" is the expanded uncertainty estimated in accordance with the Guide to the Expression of Uncertainty in Measurement (GUM). It is corresponding to a level of confidence of about 95 %. Standard uncertainties are indicated with "u".

6 LGC Quality - ISO Guide 34:2009 ISO/IEC 17025:2005 ISO 9001:2008
DIN EN ISO 14176-01:20 DQMS 102446 QMS 9

LGC GmbH, Im Biotechnologiepark, TGZ II, D-14943 Luckenwalde, Germany

© 2012 LGC limited. All rights reserved. LGC Standards is part of the LGC Group.
LoGiCal is a registered trademark of LGC Standards GmbH

9 pages



Certificate of analysis explained

1 Concentration “as is”

If the neat material is in salt form the concentration of the salt is also provided.

2 Verification of concentration

Depending on the analyte, the concentration is verified by an appropriate technique such as GCMS or HPLC.

3 Identity

We use a range of analytical techniques to confirm the identity of our reference substance (neat material); 1H-NMR, MS, IR, HPLC-DAD, GC.

4 Purity

Purity testing is performed by HPLC or GC, water content is evaluated by Coulometric Karl Fischer titration, and residual solvent by 1H-NMR.

5 Homogeneity

Homogeneity is assured by validated procedures, including ampoulation, and is verified by HPLC.

6 Physical properties

Where other physical properties are known then we also use these as an identity check (e.g. melting point, appearance, and polarimetry).

7 Absolute methods

We use elemental analysis (carbon titration) and/or quantitative NMR in the characterisation of our reference materials.

NOTE 1: Long term storage

Unless otherwise stated, storing reference materials in pure organic solvent at temperatures below those specified is not detrimental. Some analytes may come out of solution at lower temperatures and so the reference material should be warmed to room temperature and mixed prior to use. Products in aqueous solvent should not be stored at temperatures below 0°C unless explicitly stated.

NOTE 2: Uncertainty

In accordance with the Guide to the Expression of Uncertainty in Measurement (GUM), our certificates of analysis list the expanded concentration uncertainty at the about 95 % level of confidence using a coverage factor of k = 2. They incorporate uncertainty of the purity, material density and balance and weighing technique. Our concentration uncertainties are valid in the range between 19°C and 25°C.

NOTE 3: Expiry Date (Retest date)

We run “accelerated stability studies” backed up with additional stability testing at regular time points after initial production – “real time stability tests”. From the data obtained during these investigations, we determine the ideal long-term storage conditions of our reference materials. Additionally the stability of every lot is regularly investigated through a routine quality control testing program. These results can be used to reassign expiry dates and on occasion may lead to changes in the storage temperature.

NOTE 4: Concentration

The concentration is based on gravimetric material weighings – using weights traceable to SI units - and material purity factor (assay of the neat material).



Additional information

1	Concentration (“as is”)	1.131 mg/ml
---	-------------------------	-------------

2 Verification of Concentration and Homogeneity

Lot Number	Verified Concentration (mg/ml) Result Acceptance Criteria	% RSD - Homogeneity Result Acceptance Criteria
50257	1.013 ± 3 %	0.968 ≤ 3 %
Concentration verified by HPLC		

Solution Standard Assay Parameters		External Calibration (100 % amount)	
Analysis Method	HPLC		
Column:	Hypersil Gold (C18), 5 µm, 150 x 4.6 mm	Number of Measurements:	6
Injector:	Auto; 1.5 µl; 1.0 mg/ml in Methanol		
Flow:	1.0 ml/min, 40 °C	Detector:	220 nm
Conditions:	mob. Phase A: Water + 0.1 % H ₃ PO ₄ , mob. Phase B: Acetonitrile + 0.1 % H ₃ PO ₄ 0-12 min A/B 70/30, 12-15 min A/B to 30/70, 15-17 min A/B to 70/30, 17-22 min A/B 70/30 (v/v)		

3 Neat Material Data

Product Name:	Amitriptyline Hydrochloride
CAS Number:	549-18-8
Molecular Formula:	C ₂₀ H ₂₃ N HCl
Molecular Weight:	313.86
Compound Lot:	15393

Test	Method	Result
Melting Point (DSC) (°C)*	SOP 06-038	197 °C
¹ H-NMR Spectrum*	SOP 06-053	conform / complies to structure
IR Spectrum*	SOP 06-036	conform / complies to structure
Mass Spectrum (ESI)*	SOP 06-022	conform / complies to structure
Assay by carbon titration (free base)*	Elementary Analysis	88.67 %
The expanded uncertainty according to the assay is U = 0.41 % (about 95 % level of confidence using a coverage factor of k = 2).		
Assay by carbon titration (“as is”)*		100.32 %

*: Validated method performed by ISO/IEC 17025 accredited testing lab

4 The assay of the neat material is verified by the 100 % method using HPLC, corrected with water (KFT) and residual solvents.

LGCAMP0062.00-01 Lot Number 50257

LGC GmbH, Im Biotechnologiepark, TGZ II, D-14943 Luckenwalde, Germany
© 2012 LGC limited. All rights reserved. LGC Standards is part of the LGC Group. LoGiCal is a registered trademark of LGC Standards GmbH

page 2/9

Two independent sources of reference materials

Product description	LGC part number	Cerilliant part number
Acetylcodeine 1.0 mg/ml in Acetonitrile	LGCAMP0004.06-11	CERA-053
6-Acetylmorphine 0.1 mg/ml in Acetonitrile	LGCAMP0037.14-12	CERA-003
6-Acetylmorphine 1.0 mg/ml in Acetonitrile	LGCAMP0037.14-11	CERA-009
6-Acetylmorphine-D ₃ 0.1 mg/ml in Acetonitrile	LGCAMP0037.81-12	CERA-006
6-Acetylmorphine-D ₃ 1.0 mg/ml in Acetonitrile	LGCAMP0037.81-11	CERA-010
Alprazolam 1.0 mg/ml in Methanol	LGCAMP0136.00-01	CERA-903
Alprazolam-D5 0.1 mg/ml in Methanol	LGCAMP0136.80-02	CERA-902
Alprazolam-D ₅ 1.0 mg/ml in Methanol	LGCAMP0136.80-01	CERA-910
Amiodarone Hydrochloride 1.0 mg/ml in Methanol (as free base)	LGCAMP0697.00-01	CERA-060
7-Aminoclonazepam 0.1 mg/ml in Acetonitrile	LGCAMP0945.03-12	CERA-915
7-Aminoclonazepam 1.0 mg/ml in Acetonitrile	LGCAMP0945.03-11	CERA-916
7-Aminoclonazepam-D4 0.1 mg/ml in Acetonitrile	LGCAMP0945.81-12	CERA-917
7-Aminoflunitrazepam 0.1 mg/ml in Acetonitrile	LGCAMP0069.07-12	CERA-912
7-Aminoflunitrazepam 1.0 mg/ml in Acetonitrile	LGCAMP0069.07-11	CERA-911
7-Aminoflunitrazepam-D7 0.1 mg/ml in Acetonitrile	LGCAMP0069.81-12	CERA-921
7-Aminoflunitrazepam-D7 1.0 mg/ml in Acetonitrile	LGCAMP0069.81-11	CERA-925
7-Aminonitrazepam 0.1 mg/ml in Acetonitrile	LGCAMP0078.07-12	CERA-914
7-Aminonitrazepam 1.0 mg/ml in Acetonitrile	LGCAMP0078.07-11	CERA-913
Amitriptyline Hydrochloride 1.0 mg/ml in Methanol (as free base)	LGCAMP0062.00-01	CERA-923
Amitriptyline-D3 Hydrochloride 0.1 mg/ml in Methanol (as free base)	LGCAMP0062.80-02	CERA-085
Amobarbital 1.0 mg/ml in Methanol	LGCAMP1353.00-01	CERA-020
rac-Amphetamine 1.0 mg/ml in Methanol	LGCAMP0741.05-01	CERA-007
rac-Amphetamine-D ₅ Hydrochloride (D-label on ring) 0.1 mg/ml in Methanol (as free base)	LGCAMP0741.86-02	CERA-002
rac-Amphetamine-D ₅ Hydrochloride (D-label on side chain) 0.1 mg/ml in Methanol (as free base)	LGCAMP0741.87-02	CERA-005
rac-Amphetamine-D ₅ Hydrochloride (D-label on side chain) 1.0 mg/ml in Methanol (as free base)	LGCAMP0741.87-01	CERA-013
rac-Amphetamine-D ₆ Hydrochloride 0.1 mg/ml in Methanol (as free base)	LGCAMP0741.90-02	CERA-044
rac-Amphetamine-D ₆ Hydrochloride 1.0 mg/ml in Methanol (as free base)	LGCAMP0741.90-01	CERA-045

Product description	LGC part number	Cerilliant part number
rac-Amphetamine-D ₈ Hydrochloride 0.1 mg/ml in Methanol (as free base)	LGCAMP0741.91-02	CERA-017
rac-Amphetamine-D8 Hydrochloride 1.0 mg/ml in Methanol (as free base)	LGCAMP0741.91-01	CERA-018
rac-Amphetamine-D ₁₀ Hydrochloride 0.1 mg/ml in Methanol (as free base)	LGCAMP0741.88-02	CERA-038
rac-Amphetamine-D ₁₁ Hydrochloride 0.1 mg/ml in Methanol (as free base)	LGCAMP0741.89-02	CERA-016
rac-Amphetamine-D ₁₁ Hydrochloride 1.0 mg/ml in Methanol (as free base)	LGCAMP0741.89-01	CERA-019
(S)-(+)-Amphetamine (Dextroamphetamine) 1.0 mg/ml in Methanol	LGCAMP1359.01-01	CERA-008
Androstanolone (5α-Dihydrotestosterone; Stanolone) 1.0 mg/ml in Acetonitrile	LGCAMP0565.00-11	CERD-073
Androstenedione (Androst-4-ene-3,17-dione) 1.0 mg/ml in Acetonitrile	LGCAMP0323.01-11	CERA-075
Anhydroecgonine Hydrochloride 1.0 mg/ml in Water (as free base)	LGCAMP1345.09-30	CERA-036
Anhydroecgonine Methyl Ester 1.0 mg/ml in Acetonitrile	LGCAMP1345.03-11	CERA-034
5-APB HCl (1-Benzofuran-5-ylpropan-2-amine Hydrochloride; 5-(2-Aminopropyl)benzofuran Hydrochloride) 1.0 mg/ml in Methanol (as free base)	LGCAMP1275.24-01	CERA-104
6-APB HCl (1-Benzofuran-6-ylpropan-2-amine Hydrochloride; 6-(2-Aminopropyl)benzofuran Hydrochloride) 1.0 mg/ml in Methanol (as free base)	LGCAMP1275.23-01	CERA-103
Aripiprazole 1.0 mg/ml in Acetonitrile	LGCAMP0961.00-11	CERA-080
Asenapine Maleate 1.0 mg/ml in Methanol (as free base)	LGCAMP3491.00-01	CERA-101
Atenolol 1.0 mg/ml in Acetonitrile	LGCAMP0013.00-11	CERA-072
Atomoxetine Hydrochloride 1.0 mg/ml in Methanol (as free base)	LGCAMP1304.00-01	CERA-095
Atropine 1.0 mg/ml in Acetonitrile	LGCAMP0289.18-11	CERA-046
Baclofen 0.5 mg/ml in Methanol	LGCAMP1235.00-08	CERB-048
rac-BDB HCl (rac-3,4-Methylenedioxyphenyl-2-butanamine Hydrochloride) 1.0 mg/ml in Methanol (as free base)	LGCAMP1360.08-01	CERB-016
Benzoylecgonine 0.1 mg/ml in Methanol	LGCAMP1345.04-02	CERB-007
Benzoylecgonine 1.0 mg/ml in Methanol	LGCAMP1345.04-01	CERB-004
Benzoylecgonine-D3 0.1 mg/ml in Methanol	LGCAMP1345.81-02	CERB-001

Two independent sources of reference materials

Product description	LGC part number	Cerilliant part number
Benzoylecgonine-D3 1.0 mg/ml in Methanol	LGCAMP1345.81-01	CERB-008
Benzoylecgonine-D8 0.1 mg/ml in Methanol	LGCAMP1345.82-02	CERB-013
Benzoylecgonine-D8 1.0 mg/ml in Methanol	LGCAMP1345.82-01	CERB-014
Benzylpiperazine Dihydrochloride (BZP Dihydrochloride) 1.0 mg/ml in Methanol (as free base)	LGCAMP1280.04-01	CERB-906
Boldenone 1.0 mg/ml in Acetonitrile	LGCAMP0864.00-11	CERB-042
Bromazepam 1.0 mg/ml in Methanol	LGCAMP0064.00-01	CERB-903
Brompheniramine Maleate 1.0 mg/ml in Methanol (as free base)	LGCAMP0060.00-01	CERB-043
Bufotenine 1.0 mg/ml in Acetonitrile	LGCAMP1360.10-11	CERB-022
Buphedrone Hydrochloride 1.0 mg/ml in Methanol (as free base)	LGCAMP1275.32-01	CERB-047
Buprenorphine 0.1 mg/ml in Methanol	LGCAMP0120.00-02	CERB-902
Buprenorphine 1.0 mg/ml in Methanol	LGCAMP0120.00-01	CERB-044
Buprenorphine 3-β-D-Glucuronide 0.1 mg/ml in Methanol	LGCAMP0120.14-02	CERB-035
Bupropion Hydrochloride 1.0 mg/ml in Methanol (as free base)	LGCAMP0745.00-01	CERB-034
Buspirone Hydrochloride 1.0 mg/ml in Methanol (as free base)	LGCAMP0464.00-01	CERB-054
Butorphanol Tartrate 1.0 mg/ml in Methanol (as free base)	LGCAMP1192.00-01	CERB-037
Butylone Hydrochloride 1.0 mg/ml in Methanol (as free base)	LGCAMP1275.03-01	CERB-045
γ-Butyrolactone (GBL) 1.0 mg/ml in Acetonitrile	LGCAMP1275.51-11	CERB-018
Caffeine 1.0 mg/ml in Methanol	LGCAMP0494.00-01	CERC-051
Camfetamine Hydrochloride (N-Methyl-3-phenylnorbornan-2-amine Hydrochloride) 1.0 mg/ml in Methanol (as free base)	LGCAMP0995.01-01	CERC-127
Cannabinol 1.0 mg/ml in Methanol	LGCAMP1088.01-01	CERC-046
(-)-Cannabidiol 1.0 mg/ml in Methanol	LGCAMP1088.02-01	CERC-045
Carbamazepine 1.0 mg/ml in Methanol	LGCAMP0076.00-01	CERC-053
Carbamazepine 10,11-Epoxy 1.0 mg/ml in Acetonitrile	LGCAMP0076.01-11	CERC-121
(R)-(+)-Cathinone Hydrochloride 1.0 mg/ml in Methanol (as free base)	LGCAMP1360.03-01	CERC-028
(S)-(-)-Cathinone Hydrochloride 1.0 mg/ml in Methanol (as free base)	LGCAMP1360.02-01	CERC-019
Chlordiazepoxide 1.0 mg/ml in Methanol	LGCAMP0028.08-01	CERC-022
Chlorphenamine Maleate (Chlorpheniramine Maleate) 1.0 mg/ml in Methanol (as free base)	LGCAMP0090.00-01	CERC-036

Product description	LGC part number	Cerilliant part number
Chlorphenamine-D6 Maleate (Chlorpheniramine-D6 Maleate) 0.1 mg/ml in Methanol (as free base)	LGCAMP0090.80-02	CERC-086
Chlorpromazine Hydrochloride 1.0 mg/ml in Methanol (as free base)	LGCAMP0420.00-01	CERC-904
Chlorpromazine-D3 0.1 mg/ml in Methanol	LGCAMP0420.80-02	CERC-902
Chlorzoxazone 1.0 mg/ml in Acetonitrile	LGCAMP0908.00-11	CERC-074
Citalopram Hydrobromide 0.1 mg/ml in Methanol (as free base)	LGCAMP0242.00-02	CERC-057
Citalopram Hydrobromide 1.0 mg/ml in Methanol (as free base)	LGCAMP0242.00-01	CERC-095
Citalopram-D6 Hydrobromide 0.1 mg/ml in Methanol (as free base)	LGCAMP0242.80-02	CERC-090
Clenbuterol Hydrochloride 1.0 mg/ml in Dimethyl Sulfoxide (as free base)	LGCAMP1299.00-29	CERC-080
Clobazam 1.0 mg/ml in Methanol	LGCAMP0910.00-01	CERC-909
Clomipramine Hydrochloride 1.0 mg/ml in Methanol (as free base)	LGCAMP0545.00-01	CERC-118
Clomipramine-D3 Hydrochloride 0.1 mg/ml in Methanol (as free base)	LGCAMP0545.81-02	CERC-116
Clonazepam 1.0 mg/ml in Methanol	LGCAMP0945.00-01	CERC-907
Clonazepam-D4 0.1 mg/ml in Methanol	LGCAMP0945.80-02	CERC-905
Clonidine Hydrochloride 1.0 mg/ml in Methanol (as free base)	LGCAMP0983.00-01	CERC-033
Clozapine 1.0 mg/ml in Acetonitrile	LGCAMP0480.00-11	CERC-059
Clozapine-D4 0.1 mg/ml in Methanol	LGCAMP0480.80-12	CERC-091
Cocaethylene (Benzoyllecgonine) 1.0 mg/ml in Acetonitrile	LGCAMP1345.06-11	CERC-010
Cocaethylene-D3 (Benzoyllecgonine-D3) 0.1 mg/ml in Acetonitrile	LGCAMP1345.83-12	CERC-009
Cocaethylene-D8 (Benzoyllecgonine-D8) 0.1 mg/ml in Acetonitrile	LGCAMP1345.84-12	CERC-024
Cocaine 1.0 mg/ml in Acetonitrile	LGCAMP1345.05-11	CERC-008
Cocaine-D3 0.1 mg/ml in Acetonitrile	LGCAMP1345.80-12	CERC-004
Cocaine-D3 1.0 mg/ml in Acetonitrile	LGCAMP1345.80-11	CERC-014
Codeine 0.1 mg/ml in Methanol	LGCAMP0004.10-02	CERC-015
Codeine 1.0 mg/ml in Methanol	LGCAMP0004.10-01	CERC-006
Codeine 6-β-D-Glucuronide 0.1 mg/ml in Water	LGCAMP0004.20-34	CERC-087

Two independent sources of reference materials

Product description	LGC part number	Cerilliant part number
Codeine 6-β-D-Glucuronide 1.0 mg/ml in Water	LGCAMP0004.20-30	CERC-126
Codeine-D3 0.1 mg/ml in Methanol	LGCAMP0004.80-02	CERC-005
Codeine-D3 1.0 mg/ml in Methanol	LGCAMP0004.80-01	CERC-007
Codeine-D6 0.1 mg/ml in Methanol	LGCAMP0004.81-02	CERC-040
Codeine-D6 1.0 mg/ml in Methanol	LGCAMP0004.81-01	CERC-041
Cortisone 0.1 mg/ml in Methanol	LGCAMP0214.00-02	CERC-130
rac-Cotinine-D3 0.1 mg/ml in Methanol	LGCAMP0517.81-02	CERC-017
rac-Cotinine-D3 1.0 mg/ml in Methanol	LGCAMP0517.81-01	CERC-035
(-)-Cotinine 1.0 mg/ml in Methanol	LGCAMP0517.03-01	CERC-016
m-CPP HCl (1-(3-Chlorophenyl)piperazine Hydrochloride) 1.0 mg/ml in Methanol (as free base)	LGCAMP0421.09-01	CERC-089
Cyclobenzaprine Hydrochloride 1.0 mg/ml in Methanol (as free base)	LGCAMP0062.02-01	CERC-060
Dehydronorketamine Hydrochloride 0.1 mg/ml in Acetonitrile (as free base)	LGCAMP0144.07-12	CERD-046
Demoxepam 1.0 mg/ml in Methanol	LGCAMP0028.02-01	CERD-079
Desalkylflurazepam (7-Chloro-5-(2-fluorophenyl)-1,3-dihydro-2H-1,4-benzodiazepin-2-one) 1.0 mg/ml in Methanol	LGCAMP0070.02-01	CERD-915
Desalkylflurazepam-D4 0.1 mg/ml in Methanol	LGCAMP0070.81-02	CERD-924
Desethylamiodarone Hydrochloride 1.0 mg/ml in Methanol (as free base)	LGCAMP0697.03-01	CERD-055
Desethylamodiaquine-D5 Dihydrochloride 0.1 mg/ml in Methanol (as free base)	LGCAMP0617.06-02	CERD-040
Desipramine Hydrochloride 1.0 mg/ml in Methanol (as free base)	LGCAMP0589.00-01	CERD-906
Desipramine-D3 Hydrochloride 0.1 mg/ml in Methanol (as free base)	LGCAMP0589.80-02	CERD-903
Desmethylcitalopram Hydrochloride 1.0 mg/ml in Methanol (as free base)	LGCAMP0242.09-01	CERD-047
N-Desmethyclobazam (Norclobazam) 0.1 mg/ml in Acetonitrile	LGCAMP0910.01-12	CERD-049
Desmethylclomipramine Hydrochloride 1.0 mg/ml in Methanol (as free base)	LGCAMP0545.08-01	CERD-916
Desmethylclozapine (Norclozapine) 1.0 mg/ml in Methanol	LGCAMP0480.03-01	CERD-048
N-Desmethycyclobenzaprine Hydrochloride (Norcyclobenzaprine Hydrochloride) 1.0 mg/ml in Methanol (as free base)	LGCAMP0079.01-01	CERD-088

Product description	LGC part number	Cerilliant part number
Desmethyldoxepin (cis/trans) 1.0 mg/ml in Methanol	LGCAMP0032.08-01	CERD-007
Desmethylflunitrazepam 0.1 mg/ml in Methanol	LGCAMP0069.02-02	CERD-919
Desmethylflunitrazepam 1.0 mg/ml in Methanol	LGCAMP0069.02-01	CERD-918
Desmethylflunitrazepam-D4 0.1 mg/ml in Methanol	LGCAMP0069.82-02	CERD-925
rac-N-Desmethylselegiline Hydrochloride 1.0 mg/ml in Methanol (as free base)	LGCAMP0216.09-01	CERD-012
N-Desmethyltramadol Hydrochloride 1.0 mg/ml in Methanol (as free base)	LGCAMP0007.07-01	CERD-023
O-Desmethyltramadol Hydrochloride 1.0 mg/ml in Methanol (as free base)	LGCAMP0007.06-01	CERT-035
Desmethyltrimipramine Hydrochloride 1.0 mg/ml in Methanol (as free base)	LGCAMP0240.02-01	CERD-920
O-Desmethylvenlafaxine 0.1 mg/ml in Methanol	LGCAMP0393.01-02	CERV-007
Desomorphine (Dihydrodesoxymorphine; Krokodil) 1.0 mg/ml in Acetonitrile	LGCAMP0037.21-11	CERD-083
11-Deoxycortisol (17,21-Dihydroxypregn-4-ene-3,20-dione) 1.0 mg/ml in Methanol	LGCAMP0185.08-01	CERD-061
Desoxypipradrol Hydrochloride (2-DPMP HCl) 1.0 mg/ml in Methanol (as free base)	LGCAMP1275.22-01	CERD-082
Dexamethasone 1.0 mg/ml in Methanol	LGCAMP0213.00-01	CERD-085
Dextromethorphan Hydrobromide Monohydrate 1.0 mg/ml in Methanol (as anhydrous free base)	LGCAMP0033.00-01	CERD-013
Dextromethorphan-D3 0.1 mg/ml in Methanol	LGCAMP0033.80-02	CERD-071
Dextropropoxyphene 1.0 mg/ml in Acetonitrile	LGCAMP0098.00-11	CERP-011
Dextrophan Tartrate (O-Desmethyldextromethorphan Tartrate; ent-17-Methylmorphinan-3-ol (L)-Tartrate) 1.0 mg/ml in Methanol (as free base)	LGCAMP0033.09-01	CERD-034
Diazepam 1.0 mg/ml in Methanol	LGCAMP0023.00-01	CERD-907
Diazepam-D5 0.1 mg/ml in Methanol	LGCAMP0023.80-02	CERD-902
Diazepam-D5 1.0 mg/ml in Methanol	LGCAMP0023.80-01	CERD-910
Digoxin 1.0 mg/ml in Methanol	LGCAMP0212.00-01	CERD-029
Dihydrocodeine Hydrochloride 1.0 mg/ml in Methanol (as free base)	LGCAMP0812.07-01	CERD-019
Dihydrocodeine-D6 Hydrochloride 0.1 mg/ml in Methanol (as free base)	LGCAMP0812.80-02	CERD-021
Dihydromorphine 1.0 mg/ml in Methanol	LGCAMP1369.01-01	CERD-033

Two independent sources of reference materials

Product description	LGC part number	Cerilliant part number
Diltiazem Hydrochloride 1.0 mg/ml in Acetonitrile (as free base)	LGCAMP0068.00-11	CERD-035
3,4-Dimethylmethcathinone Hydrochloride (3,4-DMMC HCl) 1.0 mg/ml in Methanol (as free base)	LGCAMP1275.42-01	CERD-093
Diphenhydramine Hydrochloride 1.0 mg/ml in Methanol (as free base)	LGCAMP0490.00-01	CERD-015
Diphenhydramine-D3 Hydrochloride 0.1 mg/ml in Methanol (as free base)	LGCAMP0490.81-02	CERD-017
Disopyramide 1.0 mg/ml in Methanol	LGCAMP0108.00-01	CERD-054
Dothiepin Hydrochloride (Dosulepin Hydrochloride) 1.0 mg/ml in Methanol (as free base)	LGCAMP0510.00-01	CERD-092
Doxepin Hydrochloride 1.0 mg/ml in Methanol (as free base)	LGCAMP0032.00-01	CERD-927
Doxepin-D3 Hydrochloride (cis/trans) 0.1 mg/ml in Methanol (as free base)	LGCAMP0032.80-02	CERD-060
Doxylamine Hydrogen Succinate 1.0 mg/ml in Methanol (as free base)	LGCAMP0101.00-01	CERD-045
Duloxetine Hydrochloride 1.0 mg/ml in Methanol (as free base)	LGCAMP1122.00-01	CERD-044
Ecgonine Ethyl Ester 0.1 mg/ml in Acetonitrile	LGCAMP1345.08-12	CERE-019
Ecgonine Methyl Ester 1.0 mg/ml in Acetonitrile	LGCAMP1345.07-11	CERE-001
Ecgonine-D3 Methyl Ester 0.1 mg/ml in Acetonitrile	LGCAMP1345.85-12	CERE-002
EDDP Perchlorate (2-Ethyl-1,5-dimethyl-3,3-diphenylpyrrolinium Perchlorate) 0.1 mg/ml in Methanol (as Pyrrolinium)	LGCAMP0531.07-02	CERE-012
EDDP Perchlorate (2-Ethyl-1,5-dimethyl-3,3-diphenylpyrrolinium Perchlorate) 1.0 mg/ml in Methanol (as Pyrrolinium)	LGCAMP0531.07-01	CERE-022
EDDP-D3 Perchlorate (2-(2,2,2-Trideuteroethyl-1,5-dimethyl-3,3-diphenylpyrrolinium Perchlorate) 0.1 mg/ml in Methanol (as Pyrrolinium)	LGCAMP0531.81-02	CERE-021
EDDP-D3 Perchlorate (2-(2,2,2-Trideuteroethyl-1,5-dimethyl-3,3-diphenylpyrrolinium Perchlorate) 1.0 mg/ml in Methanol (as Pyrrolinium)	LGCAMP0531.81-01	CERE-062
(1R,2S)-Ephedrine Hydrochloride 1.0 mg/ml in Methanol (as free base)	LGCAMP0652.00-01	CERE-023
(1S,2R)-(+)-Ephedrine Hydrochloride 1.0 mg/ml in Methanol (as free base)	LGCAMP0652.03-01	CERE-011
(1S,2R)-(+)-Ephedrine-D3 Hydrochloride 1.0 mg/ml in Methanol (as free base)	LGCAMP0652.81-01	CERE-026

Product description	LGC part number	Cerilliant part number
Epitestosterone 1.0 mg/ml in Acetonitrile	LGCAMP0323.03-11	CERE-058
Estazolam 1.0 mg/ml in Methanol	LGCAMP1354.00-01	CERE-901
Estazolam-D5 0.1 mg/ml in Methanol	LGCAMP1354.80-02	CERE-903
Estradiol Hemihydrate (17 β -Estradiol Hemihydrate) 1.0 mg/ml in Acetonitrile (anhydrous substance)	LGCAMP0300.00-11	CERE-060
Estriol 1.0 mg/ml in Methanol	LGCAMP0130.00-01	CERE-074
Estrone 1.0 mg/ml in Methanol	LGCAMP0282.00-01	CERE-075
Ethcathinone Hydrochloride (N-Ethylcathinone Hydrochloride) 1.0 mg/ml in Methanol (as free base)	LGCAMP1387.08-01	CERE-080
Ethosuximide 1.0 mg/ml in Methanol	LGCAMP0750.00-01	CERE-067
4-EMC HCl (4-Ethylmethcathinone Hydrochloride) 1.0 mg/ml in Methanol (as free base)	LGCAMP1387.04-01	CERE-090
Ethylmorphine 1.0 mg/ml in Methanol	LGCAMP0799.07-01	CERE-052
Ethylone Hydrochloride 1.0 mg/ml in Methanol (as free base)	LGCAMP1275.02-01	CERE-071
Ethylone-D5 Hydrochloride 0.1 mg/ml in Methanol (as free base)	LGCAMP1343.02-02	CERE-072
β -Ethylmethcathinone Hydrochloride (Pentedrone Hydrochloride) 1.0 mg/ml in Methanol (as free base)	LGCAMP1275.63-01	CERP-087
Ethylphenidate Hydrochloride 1.0 mg/ml in Acetonitrile (as free base)	LGCAMP1031.09-11	CERE-088
Etizolam 1.0 mg/ml in Methanol	LGCAMP1386.00-01	CERE-081
Eutylone Hydrochloride (1-(3,4-Methylenedioxyphenyl)-2-ethylamino-butan-1-one Hydrochloride) 1.0 mg/ml in Methanol (as free base)	LGCAMP1366.06-01	CERE-087
Fenfluramine Hydrochloride 1.0 mg/ml in Methanol (as free base)	LGCAMP0608.00-01	CERF-009
Fentanyl 0.1 mg/ml in Methanol	LGCAMP0528.00-02	CERF-002
Fentanyl 1.0 mg/ml in Methanol	LGCAMP0528.00-01	CERF-013
Fentanyl-D5 0.1 mg/ml in Methanol	LGCAMP0528.80-02	CERF-001
Flephedrone Hydrochloride (4-Fluoromethcathinone Hydrochloride) 1.0 mg/ml in Dimethyl Sulfoxide (as free base)	LGCAMP1275.33-29	CERF-015
Fluconazole 2.0 mg/ml in Methanol	LGCAMP0235.00-07	CERF-031
Flucytosine 2.0 mg/ml in Methanol	LGCAMP0355.00-07	CERF-030
Flunitrazepam 1.0 mg/ml in Methanol	LGCAMP0069.00-01	CERF-907
Flunitrazepam-D7 0.1 mg/ml in Methanol	LGCAMP0069.80-02	CERF-915

Two independent sources of reference materials

Product description	LGC part number	Cerilliant part number
4-Fluoroamphetamine Hydrochloride 1.0 mg/ml in Methanol (as free base)	LGCAMP0741.02-01	CERF-018
3-Fluoromethcathinone Hydrochloride (1-(3-Fluorophenyl)-2-(methylamino)propan-1-one Hydrochloride) 1.0 mg/ml in Dimethyl Sulfoxide (as free base)	LGCAMP1275.43-29	CERF-016
4-Fluorotropacocaine (3-Pseudotrotyl 4-Fluorobenzoate; 3β-(p-Fluorobenzoyloxy)tropane) 1.0 mg/ml in Acetonitrile	LGCAMP1275.13-11	CERF-026
Fluoxetine Hydrochloride 1.0 mg/ml in Methanol (as free base)	LGCAMP0256.00-01	CERF-918
Fluoxymesterone 1.0 mg/ml in Acetonitrile	LGCAMP0959.00-11	CERF-909
Fluphenazine Dihydrochloride 1.0 mg/ml in Methanol (as free base)	LGCAMP0114.00-01	CERF-903
Flurazepam 1.0 mg/ml in Methanol	LGCAMP0070.06-01	CERF-003
Haloperidol 1.0 mg/ml in Methanol	LGCAMP1165.00-01	CERH-030
Haloperidol-D4 0.1 mg/ml in Methanol	LGCAMP1165.80-02	CERH-002
Heroin (Diacetylmorphine) 1.0 mg/ml in Acetonitrile	LGCAMP0037.17-11	CERH-038
Heroin-D9 (Diacetylmorphine-D9) 0.1 mg/ml in Acetonitrile	LGCAMP0037.87-12	CERH-036
Heroin-D9 (Diacetylmorphine-D9) 1.0 mg/ml in Acetonitrile	LGCAMP0037.87-11	CERH-037
Hexobarbital 1.0 mg/ml in Methanol	LGCAMP1349.00-01	CERH-013
Hydrochlorothiazide 1.0 mg/ml in Methanol	LGCAMP0011.00-01	CERH-001
Hydrocodone 1.0 mg/ml in Methanol	LGCAMP1113.14-01	CERH-003
Hydrocodone-D3 0.1 mg/ml in Methanol	LGCAMP1113.80-02	CERH-005
Hydrocodone-D6 0.1 mg/ml in Methanol	LGCAMP1113.81-02	CERH-047
Hydromorphone 1.0 mg/ml in Methanol	LGCAMP0371.06-01	CERH-004
Hydromorphone-D3 0.1 mg/ml in Methanol	LGCAMP0371.80-02	CERH-006
10-Hydroxy-10,11-dihydrocarbamazepine 1.0 mg/ml in Acetonitrile	LGCAMP0076.10-11	CERD-091
α-Hydroxyalprazolam 0.1 mg/ml in Methanol	LGCAMP0136.02-02	CERA-905
α-Hydroxyalprazolam 1.0 mg/ml in Methanol	LGCAMP0136.02-01	CERA-907
α-Hydroxyalprazolam-D ₅ 0.1 mg/ml in Methanol	LGCAMP0136.81-02	CERA-904
α-Hydroxyalprazolam-D ₅ 1.0 mg/ml in Methanol	LGCAMP0136.81-01	CERA-908
2-Hydroxyethylflurazepam 0.1 mg/ml in Methanol	LGCAMP0070.07-02	CERF-901
2-Hydroxyethylflurazepam 1.0 mg/ml in Methanol	LGCAMP0070.07-01	CERF-902
2-Hydroxyethylflurazepam-D4 0.1 mg/ml in Methanol	LGCAMP0070.82-02	CERH-919
α-Hydroxymidazolam 0.1 mg/ml in Methanol	LGCAMP1106.03-02	CERH-902

Product description	LGC part number	Cerilliant part number
3-Hydroxyphenazepam 1.0 mg/ml in Methanol	LGCAMP0828.01-01	CERH-113
9-Hydroxyrisperidone 1.0 mg/ml in Methanol	LGCAMP0491.03-01	CERH-076
trans-11-Hydroxy-Δ ₉ -THC ((6aRS,10aRS)-11-Hydroxy-Δ ⁹ -tetrahydrocannabinol) 0.1 mg/ml in Methanol	LGCAMP1088.03-02	CERH-026
trans-11-Hydroxy-Δ ₉ -THC ((6aRS,10aRS)-11-Hydroxy-Δ ⁹ -tetrahydrocannabinol) 1.0 mg/ml in Methanol	LGCAMP1088.03-01	CERH-027
α-Hydroxytriazolam 0.1 mg/ml in Methanol	LGCAMP1363.01-02	CERT-915
α-Hydroxytriazolam 1.0 mg/ml in Methanol	LGCAMP1363.01-01	CERT-911
Ibuprofen 1.0 mg/ml in Methanol	LGCAMP0002.00-01	CERI-009
Imipramine Hydrochloride 1.0 mg/ml in Methanol (as free base)	LGCAMP0077.00-01	CERI-902
Imipramine-D3 Maleate 0.1 mg/ml in Methanol (as free base)	LGCAMP0077.80-02	CERI-903
5-Iodo-2-aminoindane Hydrochloride (5-IAI HCl) 1.0 mg/ml in Methanol (as free base)	LGCAMP1275.78-01	CERI-014
Itraconazole 2.0 mg/ml in Dimethyl Sulfoxide	LGCAMP0258.00-36	CERI-015
JWH-018 ((Naphthalen-1-yl)(1-pentylindol-3-yl)methanone) 0.1 mg/ml in Acetonitrile	LGCAMP1396.09-12	CERS-025
Ketamine Hydrochloride 1.0 mg/ml in Methanol (as free base)	LGCAMP0144.00-01	CERK-002
Ketamine-D4 Hydrochloride 0.1 mg/ml in Methanol (as free base)	LGCAMP0144.80-02	CERK-003
Ketoconazole 2.0 mg/ml in Methanol	LGCAMP0145.00-07	CERK-004
Lamotrigine 1.0 mg/ml in Methanol	LGCAMP0922.00-01	CERL-019
LAMPA (Lysergic Acid N-Methyl-N-propylamide) 0.025 mg/ml in Acetonitrile	LGCAMP1346.06-13	CERL-007
LAMPA (Lysergic Acid N-Methyl-N-propylamide) 1.0 mg/ml in Acetonitrile	LGCAMP1346.06-11	CERL-004
Levamisole Hydrochloride 1.0 mg/ml in Methanol (as free base)	LGCAMP0706.00-01	CERL-025
Levetiracetam 1.0 mg/ml in Methanol	LGCAMP1372.00-01	CERL-020
Lidocaine 1.0 mg/ml in Methanol	LGCAMP0102.00-01	CERL-018
Loratadine 0.1 mg/ml in Methanol	LGCAMP0257.00-02	CERL-014
Lorazepam 1.0 mg/ml in Acetonitrile	LGCAMP0071.00-11	CERL-901
Lorazepam-D ₄ 0.1 mg/ml in Acetonitrile	LGCAMP0071.80-12	CERL-902
Lorazepam-D ₄ 1.0 mg/ml in Acetonitrile	LGCAMP0071.80-11	CERL-911
Lormetazepam 1.0 mg/ml in Methanol	LGCAMP0072.00-01	CERL-907

Two independent sources of reference materials

Product description	LGC part number	Cerilliant part number
LSD (Lysergic Acid Diethylamide) 0.025 mg/ml in Acetonitrile	LGCAMP1346.00-13	CERL-005
LSD (Lysergic Acid Diethylamide) 1.0 mg/ml in Acetonitrile	LGCAMP1346.00-11	CERL-001
Maprotiline Hydrochloride 1.0 mg/ml in Methanol (as free base)	LGCAMP0820.00-01	CERM-920
rac-MBDB HCl (rac-N-Methyl-1-(3,4-Methylenedioxyphenyl)-2-butanamine Hydrochloride) 1.0 mg/ml in Methanol (as free base)	LGCAMP1360.09-01	CERM-102
rac-MBDB-D5 (rac-N-Methyl-1-(3,4-Methylenedioxyphenyl)-2-butanamine-D5) 0.1 mg/ml in Methanol	LGCAMP1364.09-02	CERM-104
rac-MDA (rac-3,4-Methylenedioxyamphetamine) 1.0 mg/ml in Methanol	LGCAMP1360.05-01	CERM-012
rac-MDA-D5 (rac-3,4-Methylenedioxyamphetamine-D5) 0.1 mg/ml in Methanol	LGCAMP1364.05-02	CERM-010
rac-MDA-D5 (rac-3,4-Methylenedioxyamphetamine-D5) 1.0 mg/ml in Methanol	LGCAMP1364.05-01	CERM-027
MDAI (5,6-Methylenedioxy-2-aminoindane) 1.0 mg/ml in Acetonitrile	LGCAMP1275.05-11	CERM-144
rac-MDEA (rac-3,4-Methylenedioxy-N-ethylamphetamine) 1.0 mg/ml in Methanol	LGCAMP1360.07-01	CERM-065
rac-MDEA-D5 (rac-3,4-Methylenedioxy-N-ethylamphetamine-D5) 0.1 mg/ml in Methanol	LGCAMP1364.07-02	CERM-067
rac-MDEA-D5 (rac-3,4-Methylenedioxy-N-ethylamphetamine-D5) 1.0 mg/ml in Methanol	LGCAMP1364.07-01	CERM-068
rac-MDEA-D \square (rac-3,4-Methylenedioxy-N-ethylamphetamine-D \square) 0.1 mg/ml in Methanol	LGCAMP1364.08-02	CERM-081
rac-MDMA (rac-3,4-Methylenedioxymethamphetamine) 1.0 mg/ml in Methanol	LGCAMP1360.06-01	CERM-013
rac-MDMA-D5 (rac-3,4-Methylenedioxymethamphetamine-D5) 0.1 mg/ml in Methanol	LGCAMP1364.06-02	CERM-011
rac-MDMA-D5 (rac-3,4-Methylenedioxymethamphetamine-D5) 1.0 mg/ml in Methanol	LGCAMP1364.06-01	CERM-029
MDPPP HCl (3,4-Methylenedioxy- α -pyrrolidinopropiophenone Hydrochloride) 1.0 mg/ml in Methanol (as free base)	LGCAMP1387.13-01	CERM-176
Melatonin 1.0 mg/ml in Methanol	LGCAMP1373.00-01	CERM-095
Mephedrone Hydrochloride (4-MMC HCl; 4-Methylmethcathinone Hydrochloride) 1.0 mg/ml in Methanol (as free base)	LGCAMP1387.01-01	CERM-138

Product description	LGC part number	Cerilliant part number
Mephedrone-D3 Hydrochloride (4-MMC-D3 HCl; 4-Methylmethcathinone-D3 Hydrochloride) 0.1 mg/ml in Methanol (as free base)	LGCAMP1405.01-02	CERM-139
Meprobamate 1.0 mg/ml in Methanol	LGCAMP0929.00-01	CERM-039
Mesterolone 1.0 mg/ml in Acetonitrile	LGCAMP0495.00-11	CERM-130
Metformin Hydrochloride 1.0 mg/ml in Methanol (as free base)	LGCAMP0056.00-01	CERM-072
rac-Methadone 0.1 mg/ml in Methanol	LGCAMP0531.08-02	CERM-019
rac-Methadone 1.0 mg/ml in Methanol	LGCAMP0531.08-01	CERM-007
rac-Methadone-D3 0.1 mg/ml in Methanol	LGCAMP0531.80-02	CERM-008
rac-Methadone-D3 1.0 mg/ml in Methanol	LGCAMP0531.80-01	CERM-021
rac-Methadone-D9 0.1 mg/ml in Methanol	LGCAMP0531.82-02	CERM-088
rac-Methadone-D9 1.0 mg/ml in Methanol	LGCAMP0531.82-01	CERM-089
rac-Methamphetamine 0.1 mg/ml in Methanol	LGCAMP0964.01-02	CERM-022
rac-Methamphetamine 1.0 mg/ml in Methanol	LGCAMP0964.01-01	CERM-009
rac-Methamphetamine-D5 0.1 mg/ml in Methanol	LGCAMP0964.80-02	CERM-004
rac-Methamphetamine-D5 1.0 mg/ml in Methanol	LGCAMP0964.80-01	CERM-023
rac-Methamphetamine-D ₉ Hydrochloride 0.1 mg/ml in Methanol (as free base)	LGCAMP0964.89-02	CERM-090
rac-Methamphetamine-D ₉ Hydrochloride 1.0 mg/ml in Methanol (as free base)	LGCAMP0964.89-01	CERM-091
rac-Methamphetamine-D ₁₁ Hydrochloride 0.1 mg/ml in Methanol (as free base)	LGCAMP0964.86-02	CERM-059
rac-Methamphetamine-D ₁₁ Hydrochloride 1.0 mg/ml in Methanol (as free base)	LGCAMP0964.86-01	CERM-060
rac-Methamphetamine-D ₁₄ Hydrochloride 0.1 mg/ml in Methanol (as free base)	LGCAMP0964.87-02	CERM-092
rac-Methamphetamine-D ₁₄ Hydrochloride 1.0 mg/ml in Methanol (as free base)	LGCAMP0964.87-01	CERM-093
Methamphetamine Hydrochloride ((S)-(+)-Methamphetamine Hydrochloride) 1.0 mg/ml in Methanol (as free base)	LGCAMP0964.00-01	CERM-020
(S)-(-)-Methcathinone Hydrochloride 1.0 mg/ml in Methanol (as free base)	LGCAMP1360.04-01	CERM-055
Methaqualone 1.0 mg/ml in Methanol	LGCAMP1356.00-01	CERM-015
Methaqualone-D7 0.1 mg/ml in Methanol	LGCAMP1356.80-02	CERM-014
(S)-(-)-Methcathinone Hydrochloride 1.0 mg/ml in Methanol (as free base)	LGCAMP1360.04-01	CERM-055

Two independent sources of reference materials

Product description	LGC part number	Cerilliant part number
Methedrone Hydrochloride 1.0 mg/ml in Methanol (as free base)	LGCAMP1275.04-01	CERM-147
Methohexital 1.0 mg/ml in Methanol	LGCAMP1347.00-01	CERM-041
Methotrexate 1.0 mg/ml in Dimethyl Sulfoxide	LGCAMP0040.00-29	CERM-136
Methoxetamine Hydrochloride 1.0 mg/ml in Methanol (as free base)	LGCAMP1275.65-01	CERM-156
5-MeO-DALT (5-Methoxy-N,N-diallyltryptamine) 1.0 mg/ml in Acetonitrile	LGCAMP1275.07-11	CERM-165
3-MeO-PCP HCl (3-Methoxyphencyclidine Hydrochloride) 1.0 mg/ml in Methanol (as free base)	LGCAMP1366.09-01	CERM-162
4-MeO-PCP HCl (4-Methoxyphencyclidine Hydrochloride) 1.0 mg/ml in Methanol (as free base)	LGCAMP1366.01-01	CERM-163
Methylenedioxypyrovalerone Hydrochloride (MDPV HCl) 1.0 mg/ml in Methanol (as free base)	LGCAMP1275.34-01	CERM-146
3',4'-Methylenedioxy- α -pyrrolidinobutiophenone Hydrochloride (MDPBP HCl) 1.0 mg/ml in Methanol (as free base)	LGCAMP1275.61-01	CERM-154
Methylephedrine ((1R,2S)-Methylephedrine) 1.0 mg/ml in Methanol	LGCAMP0652.04-01	CERM-129
Methylethcathinone Hydrochloride (4-Methyl-N-ethylcathinone Hydrochloride; 4-MEC HCl) 1.0 mg/ml in Methanol (as free base)	LGCAMP1275.20-01	CERM-155
Methylone Hydrochloride 1.0 mg/ml in Methanol (as free base)	LGCAMP1275.01-01	CERM-140
Methylone-D3 Hydrochloride 0.1 mg/ml in Methanol (as free base)	LGCAMP1343.01-02	CERM-141
Methylphenidate Hydrochloride 1.0 mg/ml in Methanol (as free base)	LGCAMP1031.00-01	CERM-083
Methyltestosterone (17 α -Methyltestosterone) 1.0 mg/ml in Acetonitrile	LGCAMP0558.00-11	CERM-906
Metoprolol Tartrate 1.0 mg/ml in Methanol (as free base)	LGCAMP0027.00-01	CERM-123
Metronidazole 2.0 mg/ml in Methanol	LGCAMP0012.00-07	CERM-183
Mianserin Hydrochloride 1.0 mg/ml in Methanol (as free base)	LGCAMP0147.00-01	CERM-919
Mianserin-D3 0.1 mg/ml in Methanol	LGCAMP0147.80-02	CERM-901
Midazolam 1.0 mg/ml in Methanol	LGCAMP1106.00-01	CERM-908
Midazolam-D ₄ Maleate 0.1 mg/ml in Methanol (as free base)	LGCAMP1106.80-02	CERM-918
Milnacipran Hydrochloride 1.0 mg/ml in Methanol (as free base)	LGCAMP0746.00-01	CERM-145
Mirtazapine 1.0 mg/ml in Methanol	LGCAMP1005.00-01	CERM-128

Product description	LGC part number	Cerilliant part number
Modafinil 1.0 mg/ml in Acetonitrile	LGCAMP0540.00-11	CERM-084
Morphine 0.1 mg/ml in Methanol	LGCAMP0037.09-02	CERM-030
Morphine 1.0 mg/ml in Methanol	LGCAMP0037.09-01	CERM-005
Morphine 6- β -D-Glucuronide 0.1 mg/ml in Water	LGCAMP0037.16-34	CERM-096
Morphine 6- β -D-Glucuronide 1.0 mg/ml in Water	LGCAMP0037.16-30	CERM-046
Morphine N-Oxide 0.1 mg/ml in Methanol	LGCAMP0037.03-02	CER-IMP-005-01
Morphine-D3 0.1 mg/ml in Methanol	LGCAMP0037.80-02	CERM-003
Morphine-D3 1.0 mg/ml in Methanol	LGCAMP0037.80-01	CERM-006
Nalorphine Hydrochloride 1.0 mg/ml in Methanol (as free base)	LGCAMP1013.00-01	CERN-924
Naloxone Hydrochloride Dihydrate 1.0 mg/ml in Methanol (as anhydrous free base)	LGCAMP0272.00-01	CERN-004
Naltrexone Hydrochloride 1.0 mg/ml in Methanol (as free base)	LGCAMP0233.00-01	CERN-007
Nandrolone 1.0 mg/ml in Acetonitrile	LGCAMP0660.00-11	CERN-050
Naphyrone Hydrochloride (1-Naphthalen-2-yl-2-pyrrolidin-1-ylpentan-1-one Hydrochloride) 1.0 mg/ml in Methanol (as free base)	LGCAMP1275.06-01	CERN-067
Naproxen 1.0 mg/ml in Methanol	LGCAMP0152.00-01	CERN-042
Nicotinamide 1.0 mg/ml in Methanol	LGCAMP0552.00-01	CERV-016
Nicotinic Acid 1.0 mg/ml in Methanol	LGCAMP0553.00-01	CERV-017
Nitrazepam 1.0 mg/ml in Acetonitrile	LGCAMP0078.00-11	CERN-906
Nitrazepam-D5 0.1 mg/ml in Acetonitrile	LGCAMP0078.80-12	CERN-901
(-)-11-Nor-9-carboxy- Δ_9 -THC 0.1 mg/ml in Methanol	LGCAMP1088.06-02	CERT-018
(-)-11-Nor-9-carboxy- Δ_9 -THC 1.0 mg/ml in Methanol	LGCAMP1088.06-01	CERT-019
11-Nor-9-carboxy- Δ_9 -THC-D9 0.1 mg/ml in Methanol	LGCAMP1088.83-02	CERT-007
11-Nor-9-carboxy- Δ_9 -THC-D9 1.0 mg/ml in Methanol	LGCAMP1088.83-01	CERT-009
trans-11-Nor-9-carboxy- Δ_9 -THC 0.1 mg/ml in Methanol	LGCAMP1088.05-02	CERT-006
trans-11-Nor-9-carboxy- Δ_9 -THC-D ₃ 0.1 mg/ml in Methanol	LGCAMP1088.82-02	CERT-004
trans-11-Nor-9-carboxy- Δ_9 -THC-D ₃ 1.0 mg/ml in Methanol	LGCAMP1088.82-01	CERT-008
19-Norandrosterone 1.0 mg/ml in Methanol	LGCAMP0660.03-01	CERE-910
Norcocaine Hydrochloride 1.0 mg/ml in Acetonitrile (as free base)	LGCAMP1345.01-11	CERN-003

Two independent sources of reference materials

Product description	LGC part number	Cerilliant part number
Norcocaine-D3 Hydrochloride 0.1 mg/ml in Acetonitrile (as free base)	LGCAMP1345.87-12	CERN-034
Norcodeine 1.0 mg/ml in Methanol	LGCAMP0004.05-01	CERN-005
rac-Norcotinine 1.0 mg/ml in Methanol	LGCAMP0517.14-01	CERN-079
Nordazepam (Nordiazepam) 1.0 mg/ml in Methanol	LGCAMP0023.02-01	CERN-905
Nordazepam-D5 (Nordiazepam-D5) 0.1 mg/ml in Methanol	LGCAMP0023.81-02	CERN-903
Nordazepam-D5 (Nordiazepam-D5) 1.0 mg/ml in Methanol	LGCAMP0023.81-01	CERN-911
rac-Norephedrine-D3 Hydrochloride 1.0 mg/ml in Methanol (as free base)	LGCAMP0652.82-01	CERN-043
Norfentanyl (N-Phenyl-N-(piperidin-4-yl)propanamide) 1.0 mg/ml in Methanol	LGCAMP0528.08-01	CERN-031
Norfentanyl-D5 Oxalate (N-Pentadeuterophenyl-N-(piperidin-4-yl)propanamide Oxalate) 0.1 mg/ml in Methanol (as free base)	LGCAMP0528.81-02	CERN-030
Norfluoxetine Oxalate 1.0 mg/ml in Methanol (as free base)	LGCAMP0256.18-01	CERN-923
Norketamine Hydrochloride 1.0 mg/ml in Methanol (as free base)	LGCAMP0144.06-01	CERN-036
Norketamine-D ₄ Hydrochloride 0.1 mg/ml in Methanol (as free base)	LGCAMP0144.81-02	CERN-037
Normorphine 1.0 mg/ml in Methanol	LGCAMP0037.05-01	CERN-006
Noroxycodone Hydrochloride 1.0 mg/ml in Methanol (as free base)	LGCAMP0672.03-01	CERN-011
Noroxycodone-D3 Hydrochloride 0.1 mg/ml in Methanol (as free base)	LGCAMP0672.82-02	CERN-032
Noroxymorphone Hydrochloride 0.1 mg/ml in Methanol (as free base)	LGCAMP0673.03-02	CERN-013
Norpethidine (Normeperidine) 0.1 mg/ml in Methanol	LGCAMP0315.05-02	CERN-017
Norpethidine-D4 (Normeperidine-D4) 0.1 mg/ml in Methanol	LGCAMP0315.81-02	CERN-020
(+)-Norpseudoephedrine Hydrochloride (Cathine Hydrochloride) 0.1 mg/ml in Methanol (as free base)	LGCAMP2115.10-02	CERN-046
rac-Norsertraline Hydrochloride 0.1 mg/ml in Methanol (as free base)	LGCAMP0317.02-02	CERN-049
Nortriptyline Hydrochloride 1.0 mg/ml in Methanol (as free base)	LGCAMP0079.00-01	CERN-907
Nortriptyline-D3 Hydrochloride 0.1 mg/ml in Methanol (as free base)	LGCAMP0079.80-02	CERN-902
Olanzapine 1.0 mg/ml in Acetonitrile	LGCAMP0329.00-11	CERO-024

Product description	LGC part number	Cerilliant part number
Oxazepam 1.0 mg/ml in Methanol	LGCAMP0080.00-01	CERO-902
Oxazepam-D5 0.1 mg/ml in Methanol	LGCAMP0080.80-02	CERO-901
Oxazepam-D5 1.0 mg/ml in Methanol	LGCAMP0080.80-01	CERO-904
Oxycodone 1.0 mg/ml in Methanol	LGCAMP0672.10-01	CERO-002
Oxycodone-D3 0.1 mg/ml in Methanol	LGCAMP0672.81-02	CERO-005
Oxycodone-D3 1.0 mg/ml in Methanol	LGCAMP0672.81-01	CERO-006
Oxycodone-D6 0.1 mg/ml in Methanol	LGCAMP0672.80-02	CERO-007
Oxycodone-D6 1.0 mg/ml in Methanol	LGCAMP0672.80-01	CERO-008
Oxymorphone 1.0 mg/ml in Methanol	LGCAMP0673.01-01	CERO-004
Oxymorphone-D3 0.1 mg/ml in Methanol	LGCAMP0673.80-02	CERO-003
Oxymorphone-D3 1.0 mg/ml in Methanol	LGCAMP0673.80-01	CERO-019
Paracetamol (Acetaminophen) 1.0 mg/ml in Methanol	LGCAMP0042.00-01	CERA-064
Paracetamol-D4 (Acetaminophen-D4) 0.1 mg/ml in Methanol	LGCAMP0042.80-02	CERP-909
Paracetamol-D4 (Acetaminophen-D4) 1.0 mg/ml in Methanol	LGCAMP0042.80-01	CERP-917
Paroxetine Hydrochloride Hemihydrate 1.0 mg/ml in Methanol (as anhydrous free base)	LGCAMP0264.00-01	CERP-916
Pentobarbital 1.0 mg/ml in Methanol	LGCAMP1357.00-01	CERP-010
Pentobarbital-D5 0.1 mg/ml in Methanol	LGCAMP1357.80-02	CERP-009
Pentobarbital-D5 1.0 mg/ml in Methanol	LGCAMP1357.80-01	CERP-013
Pentyllone Hydrochloride 1.0 mg/ml in Methanol (as free base)	LGCAMP1275.57-01	CERP-086
Pethidine (Meperidine) 1.0 mg/ml in Methanol	LGCAMP0315.11-01	CERM-035
Pethidine-D4 (Meperidine-D4) 0.1 mg/ml in Methanol	LGCAMP0315.80-02	CERM-036
Pethidine-D4 (Meperidine-D4) 1.0 mg/ml in Methanol	LGCAMP0315.80-01	CERM-038
Phenacetin 1.0 mg/ml in Acetonitrile	LGCAMP0551.00-11	CERP-061
Phenazepam 1.0 mg/ml in Methanol	LGCAMP0828.00-01	CERP-080
Phencyclidine (PCP) 1.0 mg/ml in Methanol	LGCAMP1358.01-01	CERP-007
Phencyclidine-D5 (PCP-D5) 0.1 mg/ml in Methanol	LGCAMP1358.80-02	CERP-003
Phencyclidine-D5 (PCP-D5) 1.0 mg/ml in Methanol	LGCAMP1358.80-01	CERP-006
Pheniramine 1.0 mg/ml in Methanol	LGCAMP0059.01-01	CERP-045
Phenobarbital 1.0 mg/ml in Methanol	LGCAMP0265.00-01	CERP-008
Phenobarbital-D5 (D-label on ring) 0.1 mg/ml in Methanol	LGCAMP0265.81-02	CERP-018
Phenobarbital-D5 (D-label on ring) 1.0 mg/ml in Methanol	LGCAMP0265.81-01	CERP-019

Two independent sources of reference materials

Product description	LGC part number	Cerilliant part number
Phenobarbital-D5 (D-label on side chain) 0.1 mg/ml in Methanol	LGCAMP0265.80-02	CERP-004
Phenobarbital-D5 (D-label on side chain) 1.0 mg/ml in Methanol	LGCAMP0265.80-01	CERP-017
Phentermine 1.0 mg/ml in Methanol	LGCAMP0962.02-01	CERP-023
(1RS,2SR)-Phenylpropanolamine Hydrochloride (D,L-Norephedrine Hydrochloride) 1.0 mg/ml in Methanol (as free base)	LGCAMP0656.00-01	CERP-038
Phenytoin 1.0 mg/ml in Methanol	LGCAMP0630.00-01	CERP-063
PMA HCl (p-Methoxyamphetamine Hydrochloride) 1.0 mg/ml in Methanol (as free base)	LGCAMP0447.07-01	CERP-050
PMMA HCl (p-Methoxymethamphetamine Hydrochloride) 1.0 mg/ml in Methanol (as free base)	LGCAMP1360.01-01	CERP-051
PPP HCl (α -Pyrrolidinopropiophenone Hydrochloride) 1.0 mg/ml in Methanol (as free base)	LGCAMP1387.09-01	CERP-100
Prasterone (DHEA; Dehydroepiandrosterone) 1.0 mg/ml in Acetonitrile	LGCAMP0651.00-11	CERD-063
Prazepam 1.0 mg/ml in Methanol	LGCAMP1258.00-01	CERP-906
Prazepam-D5 0.1 mg/ml in Methanol	LGCAMP1258.80-02	CERP-905
Pregabalin 1.0 mg/ml in Methanol	LGCAMP1376.00-01	CERP-066
Pregnenolone 0.1 mg/ml in Acetonitrile	LGCAMP0222.16-12	CERP-104
Progesterone 1.0 mg/ml in Acetonitrile	LGCAMP0222.00-11	CERP-069
Promethazine Hydrochloride 1.0 mg/ml in Dimethyl Sulfoxide (as free base)	LGCAMP0412.00-29	CERP-111
Promethazine-D ₃ Hydrochloride 0.1 mg/ml in Dimethyl Sulfoxide (as free base)	LGCAMP0412.80-31	CERP-112
Propofol 1.0 mg/ml in Methanol	LGCAMP0461.00-01	CERP-076
rac-Propoxyphene-D11 0.1 mg/ml in Acetonitrile	LGCAMP0098.81-12	CERP-913
rac-Propoxyphene-D11 1.0 mg/ml in Acetonitrile	LGCAMP0098.81-11	CERP-914
rac-Propoxyphene-D5 0.1 mg/ml in Acetonitrile	LGCAMP0098.80-12	CERP-901
rac-Propoxyphene-D5 1.0 mg/ml in Acetonitrile	LGCAMP0098.80-11	CERP-904
Propranolol Hydrochloride 1.0 mg/ml in Methanol (as free base)	LGCAMP0043.00-01	CERP-055
Protriptyline Hydrochloride 1.0 mg/ml in Methanol (as free base)	LGCAMP0979.00-01	CERP-903
(+)-Pseudoephedrine Hydrochloride 1.0 mg/ml in Methanol (as free base)	LGCAMP2115.00-01	CERP-035

Product description	LGC part number	Cerilliant part number
(-)-Pseudoephedrine 1.0 mg/ml in Methanol	LGCAMP2115.11-01	CERP-036
Pseudoephedrine-D3 Hydrochloride 0.1 mg/ml in Methanol (as free base)	LGCAMP2115.80-02	CERP-056
Pyridoxine Hydrochloride 1.0 mg/ml in Methanol (as free base)	LGCAMP0021.00-01	CERV-018
Quetiapine Fumarate 1.0 mg/ml in Methanol (as free base)	LGCAMP1130.00-01	CERQ-001
Ranitidine Hydrochloride 1.0 mg/ml in Methanol (as free base)	LGCAMP0086.00-01	CERR-004
Risperidone 1.0 mg/ml in Methanol	LGCAMP0491.00-01	CERR-006
Ritalinic Acid Hydrochloride 1.0 mg/ml in Methanol (as free base)	LGCAMP1031.11-01	CERR-011
Salbutamol Sulphate (Albuterol Sulphate) 1.0 mg/ml in Methanol (as free base)	LGCAMP0381.00-01	CERA-067
Salicylic Acid 1.0 mg/ml in Acetonitrile	LGCAMP0045.00-11	CERS-019
Secobarbital 1.0 mg/ml in Methanol	LGCAMP1361.00-01	CERS-002
Selegiline Hydrochloride 1.0 mg/ml in Methanol (as free base)	LGCAMP0216.00-01	CERS-003
Sertraline Hydrochloride 1.0 mg/ml in Methanol (as free base)	LGCAMP0317.01-01	CERS-021
Sibutramine Hydrochloride Monohydrate 1.0 mg/ml in Methanol (as anhydrous free base)	LGCAMP0991.00-01	CERS-011
Sildenafil 1.0 mg/ml in Methanol	LGCAMP0254.09-01	CERS-010
Stanozolol 1.0 mg/ml in Acetonitrile	LGCAMP1285.00-11	CERS-906
Sufentanil Citrate 0.1 mg/ml in Methanol (as free base)	LGCAMP1362.00-02	CERS-008
Tadalafil 1.0 mg/ml in Acetonitrile	LGCAMP0806.00-11	CERT-072
Temazepam 1.0 mg/ml in Methanol	LGCAMP0087.00-01	CERT-907
Testosterone 1.0 mg/ml in Acetonitrile	LGCAMP0323.00-11	CERT-037
TFMPP HCl (1-(3-Trifluoromethylphenyl)piperazine Hydrochloride) 1.0 mg/ml in Methanol (as free base)	LGCAMP1280.03-01	CERT-045
(-)- Δ_9 -THC (Dronabinol) 1.0 mg/ml in Methanol	LGCAMP1088.00-01	CERT-005
Theobromine 0.1 mg/ml in Methanol	LGCAMP0577.00-02	CERT-013
Theophylline 1.0 mg/ml in Methanol	LGCAMP0176.00-01	CER-IMPC-051-01
1-(Thiophen-2-yl)-2-methylaminopropane Hydrochloride (Methiopropamine Hydrochloride; MPA HCl) 1.0 mg/ml in Methanol (as free base)	LGCAMP1275.59-01	CERM-164
Thiamine Hydrochloride (Vitamin B1) 1.0 mg/ml in Methanol (as free base)	LGCAMP0049.00-01	CERV-014

Two independent sources of reference materials

Product description	LGC part number	Cerilliant part number
Thioridazine Hydrochloride 1.0 mg/ml in Methanol (as free base)	LGCAMP0116.00-01	CERT-905
Tilidine 0.1 mg/ml in Acetonitrile	LGCAMP0134.05-12	CERT-068
Tilidine Hydrochloride Hemihydrate 1.0 mg/ml in Methanol (as anhydrous free base)	LGCAMP0134.00-01	CERT-068
Tolbutamide 1.0 mg/ml in Acetonitrile	LGCAMP1089.00-11	CERT-036
Topiramate 1.0 mg/ml in Acetonitrile	LGCAMP1348.00-11	CERT-039
Topiramate 1.0 mg/ml in Methanol	LGCAMP1348.00-01	CERT-039
Tramadol Hydrochloride 1.0 mg/ml in Methanol (as free base)	LGCAMP0007.00-01	CERT-027
Tramadol-13C-D3 Hydrochloride 0.1 mg/ml in Methanol (as free base)	LGCAMP0007.90-02	CERT-029
Trazodone Hydrochloride 1.0 mg/ml in Methanol (as free base)	LGCAMP0421.00-01	CERT-030
Trenbolone 1.0 mg/ml in Acetonitrile	LGCAMP1377.00-11	CERT-043
Triazolam 1.0 mg/ml in Methanol	LGCAMP1363.00-01	CERT-910
Triazolam-D4 0.1 mg/ml in Methanol	LGCAMP1363.80-02	CERT-908
Trimipramine 1.0 mg/ml in Methanol	LGCAMP0240.01-01	CERT-904
Trimipramine Maleate 1.0 mg/ml in Methanol (as free base)	LGCAMP0240.00-01	CERT-904
Trimipramine-D3 Maleate 0.1 mg/ml in Methanol (as free base)	LGCAMP0240.80-02	CERT-071
UR-144 ((1-Pentylindol-3-yl)(2,2,3,3-tetramethylcyclopropyl) methanone; KM X-1) 0.1 mg/ml in Acetonitrile	LGCAMP1396.10-12	CERS-062
Valproic Acid 1.0 mg/ml in Methanol	LGCAMP0751.00-01	CERV-006
Varenicline Tartrate 1.0 mg/ml in Methanol (as free base)	LGCAMP3380.00-01	CERV-008
Venlafaxine Hydrochloride 1.0 mg/ml in Methanol (as free base)	LGCAMP0393.00-01	CERV-004
Venlafaxine-D6 Hydrochloride 0.1 mg/ml in Methanol (as free base)	LGCAMP0393.80-02	CERV-009
Verapamil Hydrochloride 1.0 mg/ml in Methanol (as free base)	LGCAMP0022.00-01	CERV-002
Voriconazole 2.0 mg/ml in Methanol	LGCAMP1094.00-07	CERV-032
Warfarin 1.0 mg/ml in Acetonitrile	LGCAMP0638.00-11	CERW-003
Zaleplon 1.0 mg/ml in Methanol	LGCAMP1322.00-01	CERZ-004
Ziprasidone Hydrochloride Monohydrate 1.0 mg/ml in Methanol (as anhydrous free base)	LGCAMP1273.00-01	CERZ-002
Zolpidem Tartrate 1.0 mg/ml in Methanol (as free base)	LGCAMP0333.11-01	CERZ-901

Product description	LGC part number	Cerilliant part number
Zonisamide 1.0 mg/ml in Methanol	LGCAMP1379.00-01	CERZ-005
Zopiclone 1.0 mg/ml in Acetonitrile	LGCAMP0149.00-11	CERZ-003
Zopiclone-D4 0.1 mg/ml in Acetonitrile	LGCAMP0149.80-12	CERZ-902

Science for a safer world

lgcstandards.com



Buy online at **lgcstandards.com** or contact your local sales office.

1 Brazil

Tel: +55 12 3302 5880
Email: bz@lgcstandards.com

2 Bulgaria

Tel: +359 (0)2 971 4955
Email: bg@lgcstandards.com

3 China

Tel: +86 400 9216156
Email: infochina@lgcgroup.com

4 France

Tel: +33 (0)3 88 04 82 82
Email: fr@lgcstandards.com

5 Germany

Tel: +49 (0)281 9887 0
Email: de@lgcstandards.com

6 Hungary

Tel: +40 364 116890
Email: ro@lgcstandards.com

7 Ireland

Tel: +44 (0)20 8943 8480
Email: uksales@lgcstandards.com

8 Italy

Tel: +39 02 22476412
Email: it@lgcstandards.com

9 Middle East

Tel: +49 (0)281 9887 0
Email: de@lgcstandards.com

10 Netherlands

Tel: +49 (0)281 9887 250
Email: nl@lgcstandards.com

11 Nordic countries

Tel: +49 (0)281 9887 0
Email: de@lgcstandards.com

12 Poland

Tel: +48 22 751 31 40
Email: pl@lgcstandards.com

13 Romania

Tel: +40 364 116890
Email: ro@lgcstandards.com

14 Russia

Tel: +7 812 777 04 88
Email: ru@lgcgroup.com

15 South Africa

Tel: +27 (0)11 466 4321
Email: sales.za@lgcgroup.com

16 Spain

Tel: +34 (0)93 308 4181
Email: es@lgcstandards.com

17 Turkey

Tel: +90 530 880 33 90
Email: tur@lgcstandards.com

18 United Kingdom

Tel: +44 (0)20 8943 8480
Email: uksales@lgcstandards.com

19 USA + Canada

Tel: +1 (603) 622 7660
Email: custsvc@lgcgroup.com

Export queries

Tel: +49 (0) 281 9887 250
Email: global.sales@lgcgroup.com

Whilst every effort has been made to ensure the accuracy of the information in this catalogue, customers are directed to their local sales office or the LGC Standards website for further details and to verify product information. Specifications, terms and pricing are subject to change. LGC does not guarantee availability and reserves the right to discontinue any product. LGC does not accept liability for any loss that is caused by inaccurate product information, customer selection or inappropriate use of a product. Unless otherwise stated all trademarks are the property of LGC or its affiliated group companies. No part of this publication may be reproduced or transmitted in any form or by any means, electronic or mechanical, including photocopying, recording or any retrieval system, without the written permission of the copyright holder.

© LGC Limited, 2017. All rights reserved. STD/0044/SL/0817.