

# MicroPad MICROBIAL COUNT PLATE

## Microbiology - the cause of 95% of food safety issues

Microorganisms are of great significance to foods for several reasons. The most significant one is that they can cause spoilage of foods and can also be applied to manufacture a wide variety of food products, as well as cause microbial diseases transmitted by foods. According to world food safety market research and statistics, 99.5% of the issues in food safety is caused by microbiology.

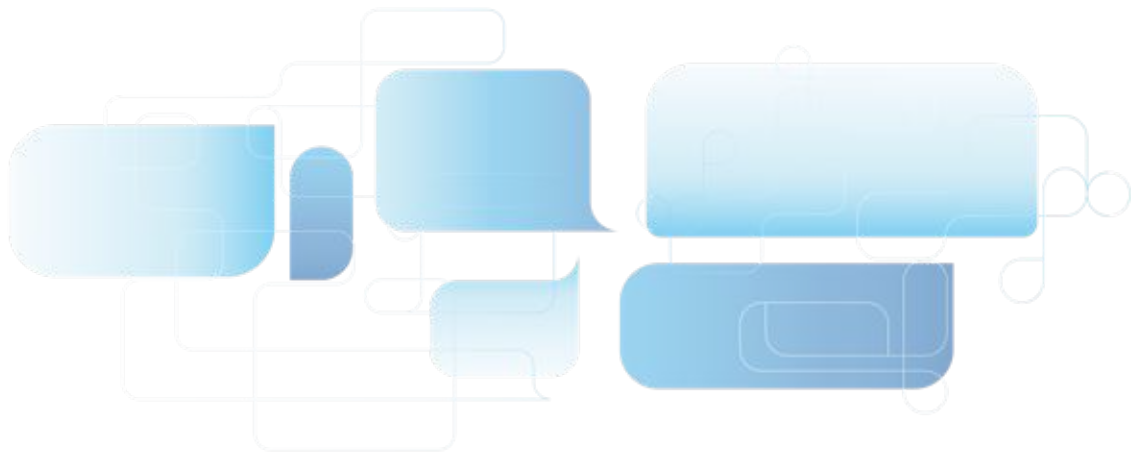
Detection, identification and enumeration of these foodborne microorganisms are of great importance. From general food hygiene to pathogens enumeration, it is necessary and urgent to make sure that the foods are safe for human consumption. Foods can be considered as a medium for microbial growth. Considering the vast array of sources, substances, and methods with which food is produced, practically every kind of microbe is a potential contaminant.

Conventional detection of pathogenic bacteria is mainly based on cultivation procedures, which use enrichment broths followed by the isolation of colonies on selective media, biochemical identification and confirmation of pathogenicity.

This culture method is selective for the search of one type of pathogen at a time. Currently, both ISO and AOAC official methods are based on these principles.

Here at GVS, we have successfully developed many new microbiology count plate based on selective medium to enumerate the food microorganisms in various samples. In this leaflet, you will find the details and ordering information.

We guarantee you a rapid, sensitive, reliable, reproducible result.



## Readily-Usable MicroPad Microbiology Enumeration Medium



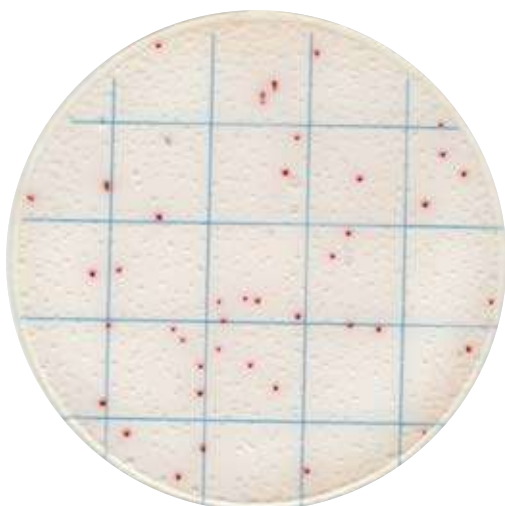
Less time & less labor work

ISO & AOAC standards compatible

No more culture medium preparation

No extra reagent required

### 1-24-C Easy Determination



#### 1ml Sample Suspension

1ml of solid sample suspension or 1ml liquid sample in PBS, adjust the pH to neutral.

#### 24h Incubation

Incubate at 36 °C for 22 - 24h.

#### Check the result

Enumerate the colonies according to the kit instruction manual. Further identification can be performed if necessary.

#### Ordering information

Product Code	Description	Result	Incubation
MCPG00125	Aerobic Count Plate	Red colony	36±1°C ,48±2h
MCPG00225	Staph Count Plate	Dark purple red colony	36±1°C ,24±2h
MCPG00325	Pivot E. coli / Coliform Count Plate	Blue purple colony	36±1°C , 24±2h
MCPG00425	Pivot Coliform Count Plate	Green colony	36±1°C ,24±2h
MCPG00525	Listeria Count Plate	Blue green colony	36±1°C ,24±2h
MCPG00825	Yeast & Mould Count Plate	Green colony	28±1°C ,48-2h
MCPG01025	Coliform Count Plate	Red colony	36±1°C ,18-24h
MCPG01125	E.coli / Coliform Count Plate	Blue purple & red colony	36±1°C ,18-24h

## Readily-Usable MicroPad Microbiology Enumeration Medium



Less time & less labor work

ISO & AOAC standards compatible

No more culture medium preparation

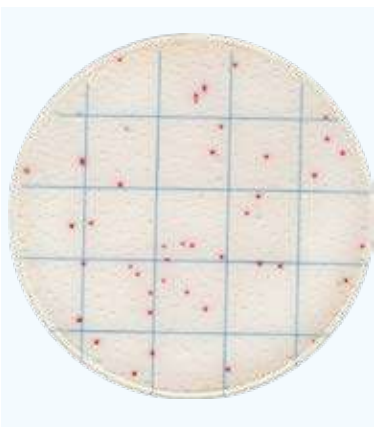
No extra reagent required

### Ordering information

Product Code	Description	Result	Incubation
MCPG01325	Bacillus Cereus Count Plate	Purple red colony	36±1°C , 48±2h
MCPG01425	Lactic Acid Bacteria Count Plate	Red colony	36±1°C , 48±2h
MCPG01525	Salmonella Count Plate	Purple red colony	36±1°C , 24±2h
MCPG01625	Enterobacteriaceae Count Plate	Red colony	36±1°C , 18-24h
MCPG01725	Geobacillus s. Count Plate	Red colony	55±1°C , 36±1h
MCPG01825	Enterococcus f. Count Plate	Black, black green colony	36±1°C , 26±2h
MCPG01925	Bacillus Psychrophilus Count Plate	Red colony	21±1°C , 48-60h
MCPG02425	Aerobic Bacillus Count Plate	Red colony	36 ±1°C , 24±2h
MCPG02525	Shigella Count Plate	Red colony	36 ±1°C , 24-48h
MCPG02625	Listeria m. Count Plate	Blue green colony	36±1°C , 36h
MCPG02725	E.Coli O157 Count Plate	Gray colony with halo	36±1°C , 18-24h
MCPG02825	Vibrio parahaemolyticus Count Plate	Red colony	36±1°C , 8-18h
MCPG02925	Psychrophilic Bacteria Count Plate	Red colony	21±1°C , 28-30h



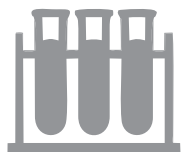
## MicroPad Aerobic Count Plate



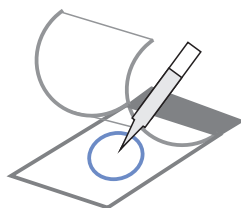
**Product Code: MCPG00125**      **25 plates / pack**

Aerobic Count Plate (ACP) is a sample-ready-culture medium system which contains readymade dry medium, a cold-water-soluble gelling agent and indicator. It can be used in direct counting of aerobic colonies after 48h – 72h incubation. The result is consistent with the corresponding ISO standards and other commercial counting plates.

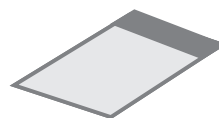
**Read the user manual carefully before test, and follow the instructions.**  
**Failure to do so may lead to inaccurate results.**



**Sample Preparation**



**Sampling**



**Incubation**



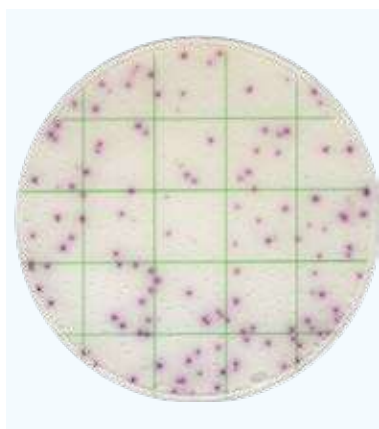
**Enumeration**

Aerobic Count Plate is applicable for the counting of as many as 65 aerobic bacteria. All will produce red colonies for counting, regardless of the size and clarity.

The following bacteria has been tested successfully with this count plate

ATCC 8099, CICC 10305, ATCC 25922, CICC 10003, CICC 10389, CICC 10907, CICC 21530, CICC 10667, CICC 24190, CICC 24186, CICC 24188, CICC 24187, ATCC 25955, ATCC 10031, ATCC 13883, ATCC 13048, ATCC 29544, ATCC 25931, ATCC 12022, CICC 10865, CICC 23829, CICC 21534, CICC 21535, ATCC 9207, ATCC 15947, ATCC 51114, ATCC 43864, ATCC 25405, GDMCC 1.163, ATCC 13311, CICC 21501, CICC 21495, CICC 21512, CICC 21501, ATCC 27511, ATCC 33291, ATCC 43478, CICC 10869, ATCC 19433, ATCC 19258, CICC 20247, ATCC 8014, CICC 6009, ATCC 6538, ATCC 25923, CICC 10384, ATCC 27217, ATCC 12228, CMCC 26069, CICC 21602, ATCC 8032, ATCC 33090, ATCC 19111, ATCC 35967, ATCC 19119, ATCC 35897, ATCC 25401, CICC 20483, CICC 21261, ATCC 11778, ATCC 6633, CICC 10071, etc.

## MicroPad Staphylococcus aureus Count Plate



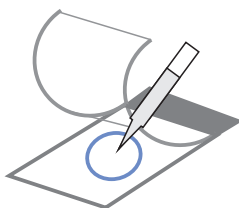
**Product Code: MCPG00225**    **25 plates / pack**

Staphylococcus aureus Count Plate is a sample-ready-culture medium system which contains readymade Baird-Parker medium, a cold-water-soluble gelling agent indicator and selective inhibitor. It can be used in direct counting of staphylococcus aureus colonies after 24h incubation. The result is consistent with ISO standards and commercial counting plates.

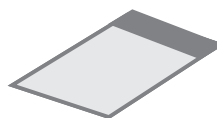
**Read the user manual carefully before test, and follow the instructions. Failure to do so may lead to inaccurate results.**



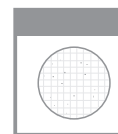
**Sample Preparation**



**Sampling**



**Incubation**

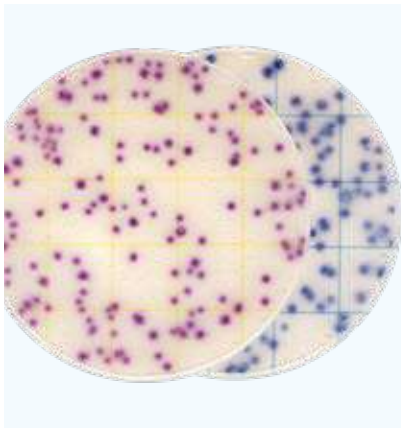


**Enumeration**

Incubate the plates at  $36 \pm 1$  °C for  $24 \pm 2$  hours.

For aquatic products, please incubate at  $30 \pm 1$  °C for  $72 \pm 3$  hours for. Up to 6 plates can be stacked in one incubation holder. On this Staphylococcus aureus count plate, Staphylococcus aureus is red colonies, other staphylococcus is light pink green or colorless colonies. Majority of gram-negative and other gram-positive bacterium cannot grow in this plate, or they can present as blue colonies.

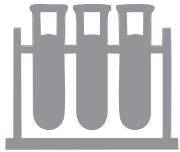
## MicroPad Pivot E. coli/Coliform Count Plate



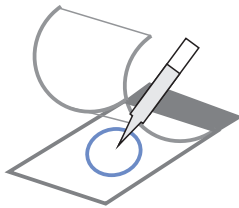
**Product Code: MCPG00325**      **25 plates / pack**

Pivot E. coli/Coliform Count Plate (ECCP) is a sample-ready-culture medium system which contains readymade dry medium, a cold-water-soluble gelling agent and indicator. It can be used in direct counting of E. coli and Coliform colonies after 24h incubation.

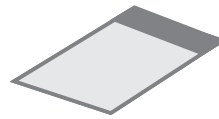
**Read the user manual carefully before test, and follow the instructions. Failure to do so may lead to inaccurate results.**



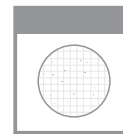
**Sample Preparation**



**Sampling**



**Incubation**



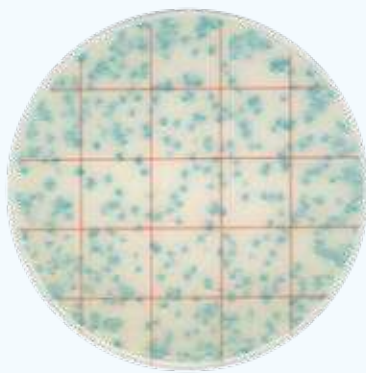
**Enumeration**

Incubate the plates at  $36 \pm 1$  °C for  $24 \pm 2$  hours. Up to 6 plates can be stacked in one incubation holder.

Counting of Coliform: Count colonies within 15-150 CFU. All red or blue colonies shall be counted regardless of the size or intensity.

Counting of E. coli: Count colonies within 10-100 CFU. All blue colonies shall be counted regardless of the size or intensity.

## MicroPad Pivot Coliform Count Plate



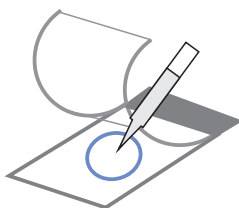
**Product Code: MCPG00425    25 plates / pack**

Pivot Coliform Count Plate (CCP) is a sample-ready-culture medium system which contains readymade dry medium, a cold-water-soluble gelling agent and indicator. It can be used in direct counting of coliform colonies after 24h incubation. The result is consistent with the corresponding ISO standards and other commercial counting plates.

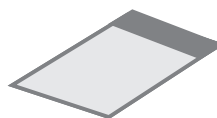
**Read the user manual carefully before test, and follow the instructions. Failure to do so may lead to inaccurate results.**



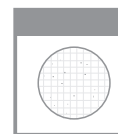
**Sample Preparation**



**Sampling**



**Incubation**



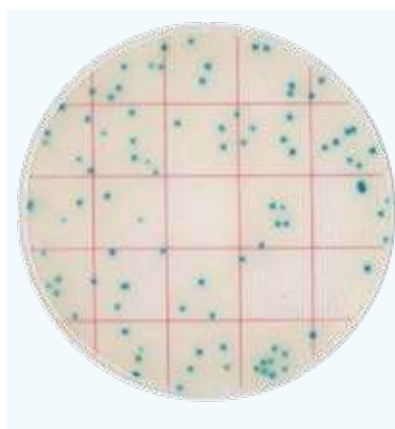
**Enumeration**

This Pivot Coliform Count Plate (CCP) can be used in the quantitative plating of Coliform Colonies in the food and beverage industries. Other applications are available upon request. Contact your supplier for more details.

Quantitative counting of the plate can be done by a standard colony counter or by software. All green colonies shall be counted regardless of the size or intensity.

Count colonies within 15-150 CFU, count all the green colonies.

## MicroPad Listeria Count Plate



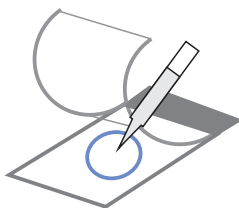
**Product Code: MCPG00525**      **25 plates / pack**

Aerobic Count Plate (ACP) is a sample-ready-culture medium system which contains readymade dry medium, a cold-water-soluble gelling agent and indicator. It can be used in direct counting of aerobic colonies after 48h – 72h incubation. The result is consistent with the corresponding ISO standards and other commercial counting plates.

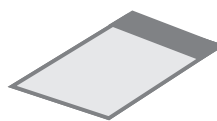
**Read the user manual carefully before test, and follow the instructions.  
Failure to do so may lead to inaccurate results.**



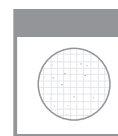
**Sample Preparation**



**Sampling**



**Incubation**



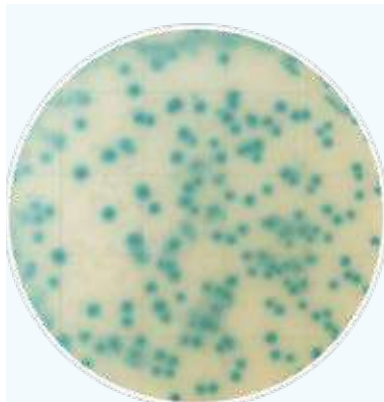
**Enumeration**

This Listeria Count Plate can be used in the quantitative plating of Listeria Colonies in the food, food material, water and production environment.

Quantitative counting of the plate can be done by a standard colony counter or by software. All green colonies shall be counted regardless of the size or intensity.

Count colonies within 30-200 CFU, count all the green colonies.

## MicroPad Yeast & Mould Count Plate



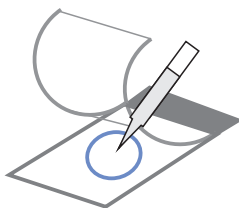
**Product Code: MCPG00825**    **25 plates / pack**

Yeast Mould Count Plate (YM) is a sample-ready-culture medium system which contains ready-made dry medium, somatomedin, a cold-water-soluble gelling agent and indicator. It can be used in direct counting of yeast and mould colonies after 2-3 days' incubation. The result is consistent with the corresponding ISO standards and other commercial counting plates.

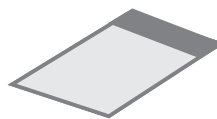
**Read the user manual carefully before test, and follow the instructions.**  
**Failure to do so may lead to inaccurate results.**



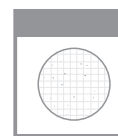
**Sample Preparation**



**Sampling**



**Incubation**



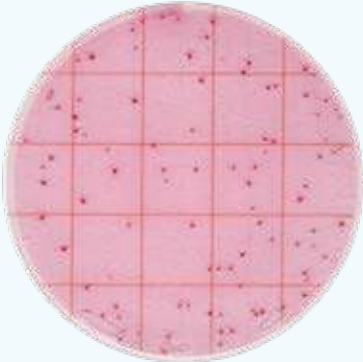
**Enumeration**

This Yeast Mould Count Plate can be used in the quantitative plating of yeast and mould colonies in the heat-processed product.

Quantitative counting of the plate can be done by a standard colony counter or by software. All green colonies shall be counted regardless of the size or intensity.

Count colonies within 10-150 CFU, count all the green colonies.

## MicroPad Coliform Count Plate



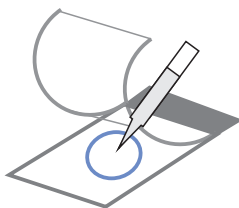
**Product Code: MCPG01025**      **25 plates / pack**

which contains readymade dry medium, a cold-water-soluble gelling agent and indicator. It can be used in direct counting of coliform colonies after 18h – 24h incubation. The result is consistent with the corresponding ISO standards and other commercial counting plates.

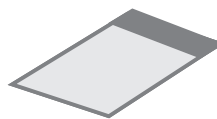
**Read the user manual carefully before test, and follow the instructions.  
Failure to do so may lead to inaccurate results.**



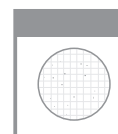
**Sample Preparation**



**Sampling**



**Incubation**



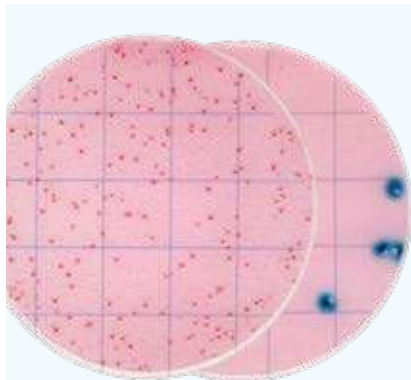
**Enumeration**

This Coliform Count Plate can be used in the quantitative plating of Coliform Colonies in the food and beverage industries. Incubate the plates at  $36 \pm 1$  °C for 18-24 hours. Up to 6 plates can be stacked in one incubation holder.

Quantitative counting of the plate can be done by a standard colony counter or by software. All red colonies shall be counted regardless of the size or intensity.

Count colonies within 15-150 CFU, count all the red colonies.

## MicroPad E. coli/Coliform Count Plate



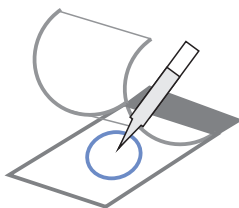
**Product Code: MCPG01125**      **25 plates / pack**

E. coli/Coliform Count Plate is a sample-ready-culture medium system which contains readymade dry medium, a cold-water-soluble gelling agent and indicator. It can be used in direct counting of E. coli/Coliform colonies after 18-24h incubation. The result is consistent with the ISO standards and other commercial plates.

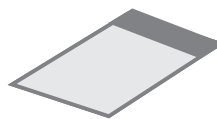
**Read the user manual carefully before test, and follow the instructions.  
Failure to do so may lead to inaccurate results.**



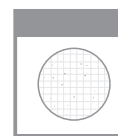
**Sample Preparation**



**Sampling**



**Incubation**

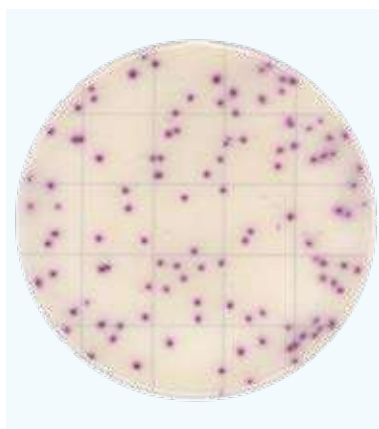


**Enumeration**

This E. coli/Coliform Count Plate can be used in the quantitative plating of E. coli/Coliform Colonies in the food and beverage industries.

Coliform can grow in this plate, Escherichia Coli are blue colonies associated with gas bubble, Klebsiella pneumonia and enterobacter cloacae are red colonies associated with gas bubble, Citrobacter are red colonies without gas bubble. Other gram-negative bacterium (Salmonella, Shigella) can grow in this plate, their colonies are red without gas bubble. Enterobacter Sakazakii can grow in this plate, its colonies are red associated with gas bubble.

## MicroPad Bacillus cereus Count Plate



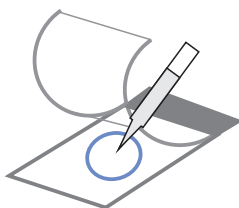
**Product Code: MCPG01325**    **25 plates / pack**

Bacillus cereus Count Plate (BCCP) is a sample-ready-culture medium system which contains readymade dry medium, a cold-water-soluble gelling agent and indicator. It can be used in direct counting of Bacillus cereus colonies after 24h incubation. The result is consistent with the corresponding ISO standards and other commercial counting plates.

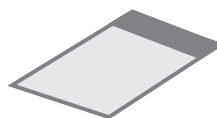
**Read the user manual carefully before test, and follow the instructions. Failure to do so may lead to inaccurate results.**



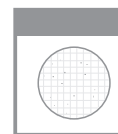
**Sample Preparation**



**Sampling**



**Incubation**



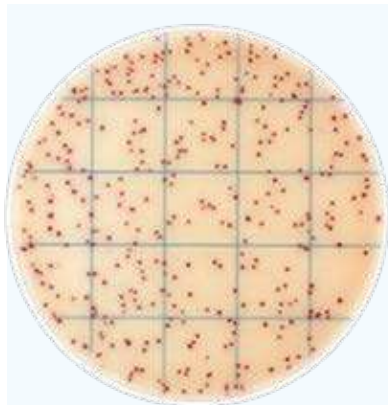
**Enumeration**

This Bacillus cereus Count Plate (BCCP) can be used in the quantitative plating of Bacillus cereus Colonies in the food and beverage industries. Other applications are available upon request. Contact your supplier for more details.

Quantitative counting of the plate can be done by a standard colony counter or by software. All purple red colonies shall be counted regardless of the size or intensity.

Count colonies within 20-200 CFU, count all the purple red colonies.

## MicroPad Lactic Acid Bacteria Count Plate



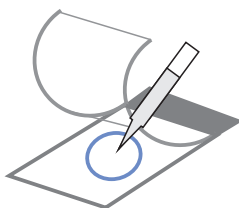
**Product Code: MCPG01425**    **25 plates / pack**

Lactic Acid Bacteria Count Plate (LABP) is a sample-ready-culture medium system which contains readymade dry medium, a cold-water-soluble gelling agent and indicator. It can be used in direct counting of Salmonella colonies after 24h incubation. The result is consistent with the corresponding ISO standards and other commercial counting plates.

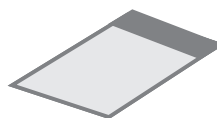
**Read the user manual carefully before test, and follow the instructions. Failure to do so may lead to inaccurate results.**



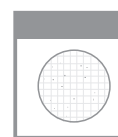
**Sample Preparation**



**Sampling**



**Incubation**



**Enumeration**

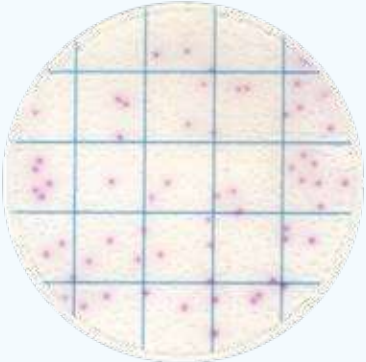
This Lactic Acid Bacteria Count Plate (LABP) can be used in the quantitative plating of Lactic Acid Bacteria Colonies in the food and beverage industries. Other applications are available upon request. Contact your supplier for more details.

Quantitative counting of the plate can be done by a standard colony counter or by software. All red colonies shall be counted regardless of the size or intensity.

Count colonies within 30-300 CFU, count all the red colonies.



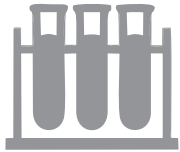
## MicroPad Salmonella Count Plate



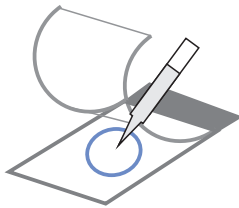
**Product Code: MCPG01525    25 plates / pack**

Salmonella Count Plate (SCP) is a sample-ready-culture medium system which contains readymade dry medium, a cold-water-soluble gelling agent and indicator. It can be used in direct counting of Salmonella colonies after 24h incubation. The result is consistent with the corresponding ISO standards and other commercial counting plates.

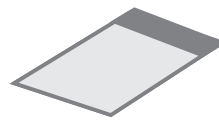
**Read the user manual carefully before test, and follow the instructions. Failure to do so may lead to inaccurate results.**



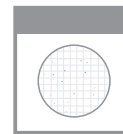
**Sample Preparation**



**Sampling**



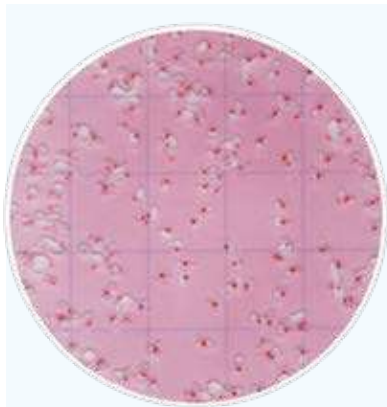
**Incubation**



**Enumeration**

This Salmonella Count Plate (SCP) can be used in the quantitative plating of Salmonella Colonies in the food and beverage industries. Other applications are available upon request. Contact your supplier for more details. Quantitative counting of the plate can be done by a standard colony counter or by software. All purple red colonies shall be counted regardless of the size or intensity. Count colonies within 30-200 CFU, count all the purple red colonies.

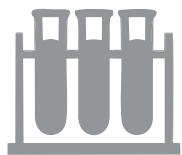
## MicroPad Enterobacteriaceae Count Plate



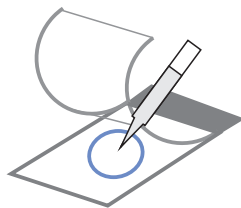
**Product Code: MCPG01625**    **25 plates / pack**

Enterobacteriaceae Count Plate (EBCP) is a sample-ready-culture medium system which contains readymade dry medium, a cold-water-soluble gelling agent and indicator. It can be used in direct counting of Enterobacteriaceae colonies after 24h incubation. The result is consistent with the corresponding ISO standards and other commercial plates.

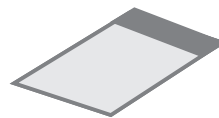
**Read the user manual carefully before test, and follow the instructions. Failure to do so may lead to inaccurate results.**



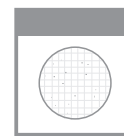
**Sample Preparation**



**Sampling**



**Incubation**




**Enumeration**

This Enterobacteriaceae Count Plate (EBCP) can be used in the quantitative plating of Enterobacteriaceae Colonies in the food and beverage industries. Other applications are available upon request. Contact your supplier for more details.

Quantitative counting of the plate can be done by a standard colony counter or by software. All red colonies shall be counted regardless of the size or intensity.

Count colonies within 15-150 CFU, count all the red colonies.

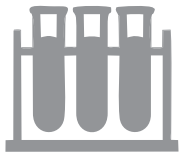
## MicroPad Geobacillus stearothermophilus Count Plate



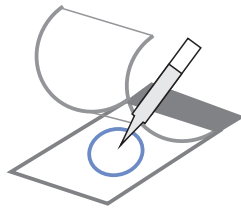
**Product Code: MCPG01725    25 plates / pack**

Geobacillus stearothermophilus Count Plate (GSCP) is a sample-ready-culture medium system which contains readymade dry medium, a cold-water-soluble gelling agent and indicator. It can be used in direct counting of Geobacillus stearothermophilus colonies after 36h incubation. The result is consistent with the corresponding ISO standards.

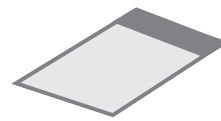
**Read the user manual carefully before test, and follow the instructions.  
Failure to do so may lead to inaccurate results.**



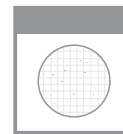
**Sample Preparation**



**Sampling**



**Incubation**



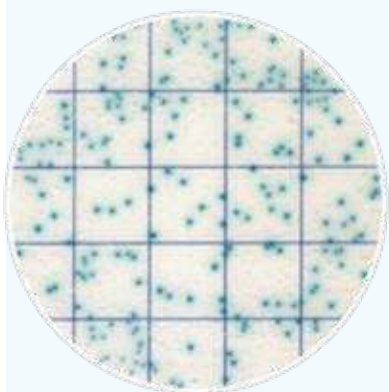
**Enumeration**

This Geobacillus stearothermophilus Count Plate (GSCP) can be used in the quantitative plating of Geobacillus stearothermophilus Colonies in the food and beverage industries. Other applications are available upon request. Contact your supplier for more details.

Quantitative counting of the plate can be done by a standard colony counter or by software. All red colonies shall be counted regardless of the size or intensity.

Count colonies within 10-150 CFU, count all the red colonies.

## MicroPad Enterococcus faecalis Count Plate



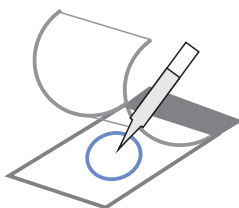
**Product Code: MCPG01825**    **25 plates / pack**

Enterococcus faecalis Count Plate (EFCP) is a sample-ready-culture medium system which contains readymade dry medium, a cold-water-soluble gelling agent and indicator. It can be used in direct counting of Enterococcus faecalis colonies after 24h incubation. The result is consistent with the corresponding ISO standards and other commercial plates.

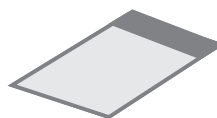
**Read the user manual carefully before test, and follow the instructions. Failure to do so may lead to inaccurate results.**



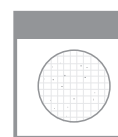
**Sample Preparation**



**Sampling**



**Incubation**



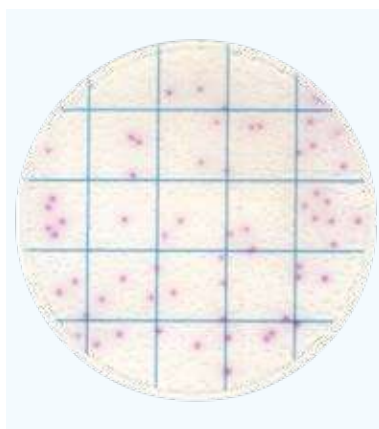
**Enumeration**

This Enterococcus faecalis Count Plate (SCP) can be used in the quantitative plating of Enterococcus faecalis Colonies in the food and beverage industries. Other applications are available upon request. Contact your supplier for more details.

Quantitative counting of the plate can be done by a standard colony counter or by software. All purple red colonies shall be counted regardless of the size or intensity.

Count colonies within 20-100 CFU, count all the dark colonies with blue halo.

## MicroPad Bacillus Psychrophilus Count Plate



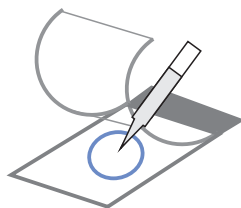
**Product Code: MCPG01925    25 plates / pack**

Bacillus Psychrophilus Count Plate (BPCP) is a sample-ready-culture medium system which contains readymade dry medium, a cold-water-soluble gelling agent and indicator. It can be used in direct counting of bacillus psychrophilus colonies after 48-60h incubation. The result is consistent with the corresponding ISO standards and other commercial plates.

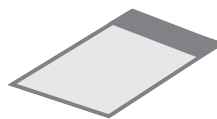
**Read the user manual carefully before test, and follow the instructions.  
Failure to do so may lead to inaccurate results.**



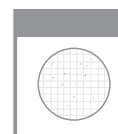
**Sample Preparation**



**Sampling**



**Incubation**



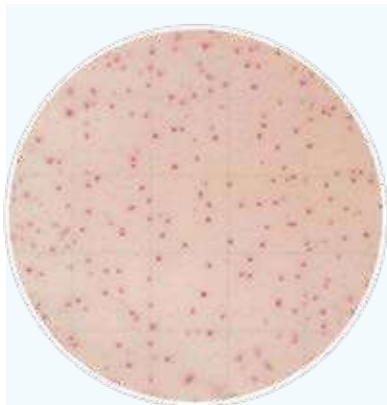
**Enumeration**

This Bacillus Psychrophilus Count Plate (BPCP) can be used in the quantitative plating of Bacillus Psychrophilus Colonies in the food and beverage industries. Other applications are available upon request. Contact your supplier for more details.

Quantitative counting of the plate can be done by a standard colony counter or by software. All red colonies shall be counted regardless of the size or intensity.

Count colonies within 10-150 CFU, count all the red colonies.

## MicroPad Aerobic Bacillus Count Plate



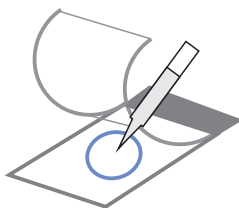
**Product Code: MCPG02425      25 plates / pack**

Aerobic Bacillus Count Plate (ABCP) is a sample-ready-culture medium system which contains readymade dry medium, a cold-water-soluble gelling agent and indicator. It can be used in direct counting of aerobic bacillus colonies after 24h incubation. The result is consistent with the corresponding ISO standards and other commercial counting plates.

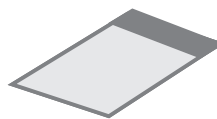
**Read the user manual carefully before test, and follow the instructions.  
Failure to do so may lead to inaccurate results.**



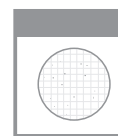
**Sample Preparation**



**Sampling**



**Incubation**



**Enumeration**

This Aerobic Bacillus Count Plate (ABCP) can be used in the quantitative plating of Aerobic Bacillus Colonies in the food and beverage industries. Other applications are available upon request. Contact your supplier for more details.

Quantitative counting of the plate can be done by a standard colony counter or by software. All red colonies shall be counted regardless of the size or intensity.

Count colonies within 10-150 CFU, count all the purple red colonies.

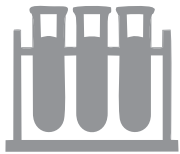
## MicroPad Shigella Count Plate



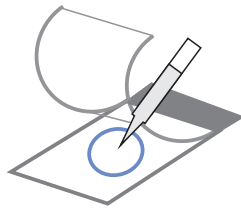
**Product Code: MCPG02525    25 plates / pack**

Shigella Count Plate (SHCP) is a sample-ready-culture medium system which contains readymade dry medium, a cold-water-soluble gelling agent and indicator. It can be used in direct counting of Shigella colonies after 24-48h incubation. The result is consistent with the corresponding ISO standards and other commercial counting plates.

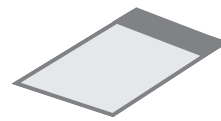
**Read the user manual carefully before test, and follow the instructions. Failure to do so may lead to inaccurate results.**



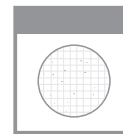
**Sample Preparation**



**Sampling**



**Incubation**



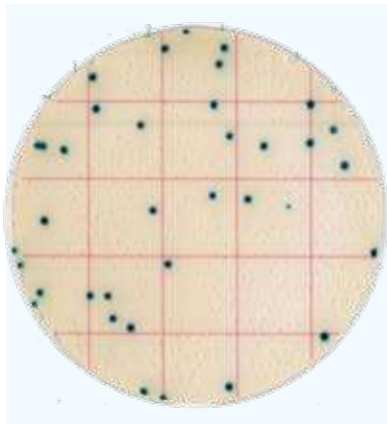
**Enumeration**

This Shigella Count Plate (SHCP) can be used in the quantitative plating of Salmonella Colonies in the food and beverage industries. Other applications are available upon request. Contact your supplier for more details.

Quantitative counting of the plate can be done by a standard colony counter or by software. All red colonies shall be counted regardless of the size or intensity.

Count all the red colonies.

## MicroPad Listeria M. Count Plate



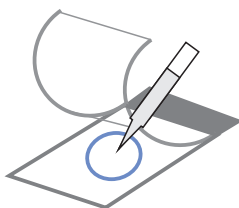
**Product Code: MCPG02625    25 plates / pack**

Listeria M. Count Plate (LMCP) is a sample-ready-culture medium system which contains readymade dry medium, a cold-water-soluble gelling agent and indicator. It can be used in direct counting of listeria monocytogenes colonies after 36h incubation. The result is consistent with the corresponding ISO standards and other commercial plates.

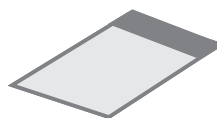
**Read the user manual carefully before test, and follow the instructions. Failure to do so may lead to inaccurate results.**



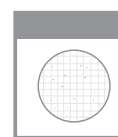
**Sample Preparation**



**Sampling**



**Incubation**



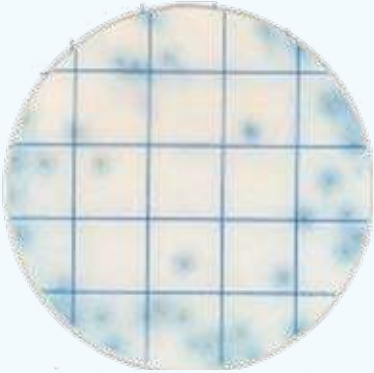
**Enumeration**

This Listeria M. Count Plate (LMCP) can be used in the quantitative plating of Listeria Monocytogenes Colonies in the food and beverage industries. Other applications are available upon request. Contact your supplier for more details.

Quantitative counting of the plate can be done by a standard colony counter or by software. All blue green colonies shall be counted regardless of the size or intensity.

Enrichment is needed before testing with this count plate.

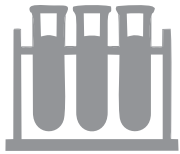
## MicroPad E.Coli 0157 Count Plate



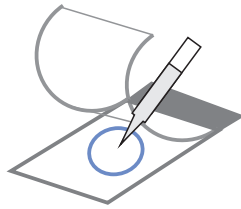
**Product Code: MCPG02725    25 plates / pack**

E. Coli 0157 Count Plate (ECOCP) is a sample-ready-culture medium system which contains ready made dry medium, a cold-water-soluble gelling agent and indicator. It can be used in direct counting of E. Coli 0157 colonies after 24h incubation. The result is consistent with the corresponding ISO standards and other commercial counting plates.

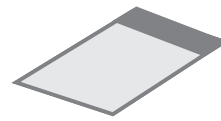
**Read the user manual carefully before test, and follow the instructions.  
Failure to do so may lead to inaccurate results.**



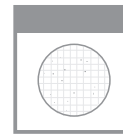
**Sample Preparation**



**Sampling**



**Incubation**

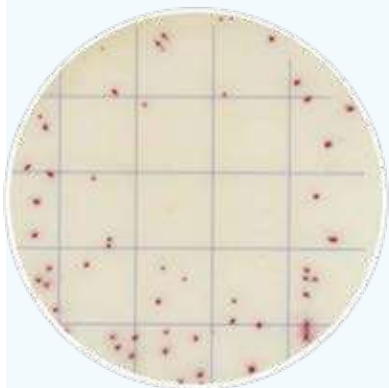


**Enumeration**

This E. Coli 0157 Count Plate (ECOCP) can be used in the quantitative plating of E. Coli 0157 Colonies in the food and beverage industries. Other applications are available upon request. Contact your supplier for more details.

Quantitative counting of the plate can be done by a standard colony counter or by software. E.Coli 0157 colonies are gray with dark-blue halo, higher concentration of colonies may lead to dark background. Please further dilute the sample for enumeration. Count the gray colonies with dark-blue halo.

## MicroPad Vibrio parahaemolyticus Count Plate



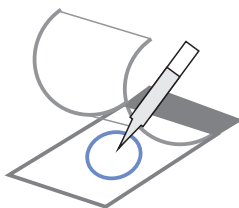
**Product Code: MCPG02825**    **25 plates / pack**

Vibrio Parahaemolyticus Count Plate (VPCP) is a sample-ready-culture medium system which contains readymade dry medium, a cold-water-soluble gelling agent and indicator. It can be used in direct counting of Vibrio Parahaemolyticus colonies after 8-18h incubation. The result is consistent with the corresponding ISO standards and other commercial plates.

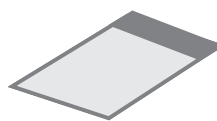
**Read the user manual carefully before test, and follow the instructions.  
Failure to do so may lead to inaccurate results.**



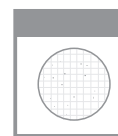
**Sample Preparation**



**Sampling**



**Incubation**



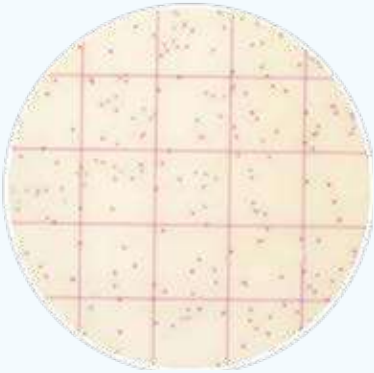
**Enumeration**

This Vibrio Parahaemolyticus Count Plate (VPCP) can be used in the quantitative plating of Vibrio Parahaemolyticus Colonies in the food and beverage industries. Other applications are available upon request. Contact your supplier for more details.

Quantitative counting of the plate can be done by a standard colony counter or by software. All red colonies shall be counted regardless of the size or intensity.

Count all the red colonies.

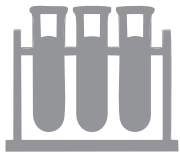
## MicroPad Psychrophilic Bacteria Count Plate



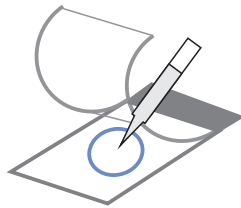
**Product Code: MCPG02925    25 plates / pack**

Psychrophilic Bacteria Count Plate (PBCP) is a sample-ready-culture medium system which contains readymade dry medium, a cold-water-soluble gelling agent and indicator. It can be used in direct counting of Psychrophilic Bacteria colonies after 28-30h incubation. The result is consistent with the corresponding ISO standards and other commercial plates.

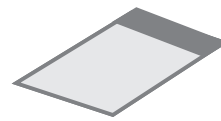
**Read the user manual carefully before test, and follow the instructions. Failure to do so may lead to inaccurate results.**



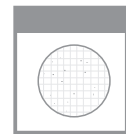
**Sample Preparation**



**Sampling**



**Incubation**



**Enumeration**

This Psychrophilic Bacteria Count Plate (PBCP) can be used in the quantitative plating of Psychrophilic Bacteria Colonies in the food and beverage industries. Other applications are available upon request. Contact your supplier for more details.

Quantitative counting of the plate can be done by a standard colony counter or by software. All red colonies shall be counted regardless of the size or intensity.

Count colonies within 10-300 CFU, count all the red colonies.

## Dehydrated Culture Media

### 01 Total Viable Count (TVC)

Product Code	Product	Description	Qty.
MIMEB1818FA	Plate Count Agar (PCA) (Standards Methods Agar)	Used for enumeration of viable microorganisms. (NMKL)	500 g
MIMEB1819FA	Plate Count Agar (PCA) (Standards Methods Agar)	Used for enumeration of viable microorganisms. (NMKL)	1000g
MIMEB1836FA	Nutrient Broth (NB)	A general-purpose growth medium for bacteria.	500 g
MIMEB1837FA	Nutrient Broth (NB)	A general-purpose growth medium for bacteria	1000g
MIMEB1826FA	Nutrient Agar (NA)	A general-purpose medium for the growth of a wide variety of microorganisms. (AFNOR, AOAC, BSI, FDA, ISO, NMKL)	500 g
MIMEB1827FA	Nutrient Agar (NA)	A general-purpose medium for the growth of a wide variety of microorganisms. (AFNOR, AOAC, BSI, FDA, ISO, NMKL)	1000g
MIMEB1833FA	Tryptone Soya Agar (TSA)	For enumerating and enriching nonfastidious or fastidious bacteria.	500 g
MIMEB1856FA	Tryptic Soy Broth (TSB) (Soybean Casein Digest)	Used for cultivation of a wide variety of nonfastidious microorganisms. (USP)	500 g

### 02 Coliforms, Escherichia coli (E. coli), fecal coliforms, and other intestinal bacteria

Product Code	Product	Description	Qty.
MIMEB1838FA	Lauryl Sulfate Tryptose Broth (LST)	Used for detecting Coliform bacteria and faecal coliforms by the multiple-tube fermentation technique.	500 g
MIMEB1839FA	Lauryl Sulfate Tryptose Broth (LST)	Used for detecting Coliform bacteria and faecal coliforms by the multiple-tube fermentation technique.	1000g
MIMEB1820FA	Violet Red Bile Glucose Agar (VRBA)	Used for selective and differential isolation of gram-negative bacilli. (USP)	500 g
MIMEB1821FA	Violet Red Bile Glucose Agar (VRBA)	Used for selective and differential isolation of gram-negative bacilli. (USP)	1000g
MIMEB1846FA	EC Broth	Used for detection of coliform bacteria at 37°C and Escherichia coli at 44.5°C. (BAM, EPA, SMWW)	500 g
MIMEB1828FA	MacConkey Agar (MAC)	Used for selective and differential isolation of gram-negative bacilli. (BAM, COMPF, SMWW, USP)	500 g
MIMEB1853FA	Eosin-Methylene Blue Agar (EMB) (Levine Agar)	Used for isolation and differentiation of Enterobacteriaceae.	500 g
MIMEB1851FA	Lactose Bile Fermentation Broth	Used for the detection of coliform bacteria in water, foods and dairy products. (AOAC, BAM, COMPF, EPA, USDA, USP)	500 g
MIMEB1852FA	Lactose Bile Fermentation Broth	Used for the detection of coliform bacteria in water, foods and dairy products. (AOAC, BAM, COMPF, EPA, USDA, USP)	1000g
MIMEB1830FA	Brain Heart Infusion Broth (BHI)	A highly nutritious medium for the growth of fastidious organisms, and suitable for blood cultures. (FDA, NMKL, USDA)	500 g

### 03 Yeast and mold and other fungi

Product Code	Product	Description	Qty.
MIMEB1823FA	Rose Bengal Agar	Used for selective isolation and enumeration of yeast, and fungi from environmental samples and food.	500 g
MIMEB1824FA	Rose Bengal Agar	Used for selective isolation and enumeration of yeast, and fungi from environmental samples and food.	1000g

## Dehydrated Culture Media

### 04 Salmonella

Product Code	Product	Description	Qty.
MIMEB1840FA	Buffered Peptone Water (BPW)	A pre-enrichment medium for use prior to selective enrichment for the isolation of <i>Salmonella</i> spp. from foods. (AFNOR, BSI, IDF, NMKL)	500 g
MIMEB1842FA	Buffered Peptone Water (BPW)	A pre-enrichment medium for use prior to selective enrichment for the isolation of <i>Salmonella</i> spp. from foods. (AFNOR, BSI, IDF, NMKL)	1000g
MIMEB1841FA	Buffered Peptone Water (BPW)	A pre-enrichment medium for use prior to selective enrichment for the isolation of <i>Salmonella</i> spp. from foods. (AFNOR, BSI, IDF, NMKL)	1000g
MIMEB1849FA	Selenite Cystine Broth	A selective enrichment broth for isolation of <i>Salmonella</i> spp.	500 g
MIMEB1844FA	Tetrathionate Broth Base (TTB)	A selective enrichment medium for use with iodine for the recovery of <i>Salmonella</i> spp.	1000g
MIMEB1843FA	Tetrathionate Broth Base (TTB)	A selective enrichment medium for use with iodine for the recovery of <i>Salmonella</i> spp.	500 g
MIMEB1831FA	Bismuth Sulfite Agar (BS)	Used for selective isolation of <i>Salmonellae</i> from faeces, urine, sewage and other materials.	500 g
MIMEB1860FA	Hektoen Enteric (HE) Agar	A differential selective medium for the isolation of <i>Shigella</i> and <i>Salmonella</i> species. (AFNOR, ISO, NMKL)	500 g
MIMEB1829FA	Triple Sugar Iron (TSI) Agar	Used for the differentiation of microorganisms on the basis of dextrose, lactose and sucrose fermentation and hydrogen sulfide production.	500 g
MIMEB1834FA	Xylose Lysine Desoxycholate (XLD) Agar	Used for selective isolation of Gramnegative bacteria, especially for <i>Salmonella</i> and <i>Shigella</i> . (ISO, FDA, EP, USP)	500 g

### 05 Staphylococcus aureus

Product Code	Product	Description	Qty.
MIMEB1847FA	7.6% Sodium Chloride Broth	Used for the selective enrichment of <i>Staphylococcus aureus</i> and other salt-tolerant bacteria.	500 g
MIMEB1848FA	7.6% Sodium Chloride Broth	Used for the selective enrichment of <i>Staphylococcus aureus</i> and other salt-tolerant bacteria.	1000g
MIMEB1835FA	Baird-Parker Agar Base	A selective medium for the isolation and enumeration of coagulase positive staphylococci. Do not use with RPF Supplement. (AFNOR, AOAC, BSI, EP, IDF, ISO, NMKL, USDA)	500 g
MIMEB1830FA	Brain Heart Infusion Broth (BHI)	A highly nutritious medium used for the growth of fastidious organisms and suitable Used for blood cultures. (FDA, NMKL, USDA)	500 g
MIMEB1856FA	Tryptic Soy Broth (TSB) (Soybean Casein Digest)	Used for the cultivation of a wide variety of nonfastidious microorganisms. (USP)	500 g

### 06 Listeria monocytogenes

Product Code	Product	Description	Qty.
MIMEB1825FA	Listeria Enrichment Broth Base (UVM Formulation)	A two-step selective enrichment (USDA-FSIS) method.	500 g
MIMEB1850FA	PALCAM Agar Base	A selective and diagnostic medium used for the detection of <i>Listeria monocytogenes</i> . (AFNOR, IDF, NMKL)	500 g
MIMEB1822FA	Listeria Chromogenic Medium	Used for chromogenic culture of <i>Listeria</i> and <i>Listeria monocytogenes</i> .	1000 mL

### 07 Shigella

Product Code	Product	Description	Qty.
MIMEB1845FA	Gram Negative Enrichment Broth (GN Broth)	Used for the selective enrichment of gram-negative microorganisms, especially <i>Salmonella</i> and <i>Shigella</i> . (USDA)	500 g
MIMEB1834FA	Xylose Lysine Desoxycholate (XLD) Agar	Used for selective isolation of Gramnegative bacteria, especially for <i>Salmonella</i> and <i>Shigella</i> . (ISO, FDA, EP, USP)	500 g
MIMEB1828FA	MacConkey Agar (MAC)	Used for selective and differential isolation of gram-negative bacilli. (BAM, COMPF, SMWW, USP)	500 g
MIMEB1829FA	Triple Sugar Iron (TSI) Agar	Used for the differentiation of microorganisms on the basis of dextrose, lactose and sucrose fermentation and hydrogen sulfide production.	500 g
MIMEB1826FA	Nutrient Agar (NA)	A general-purpose medium used for the growth of a wide variety of microorganisms. (AFNOR, AOAC, BSI, FDA, ISO, NMKL)	500 g



## Dehydrated Culture Media

### 08 Diarrhoeagenic Escherichia coli

Product Code	Product	Description	Qty.
MIMEB1836FA	Nutrient Broth (NB)	A general-purpose growth medium for bacteria.	500 g
MIMEB1826FA	Nutrient Agar (NA)	A general-purpose medium used for the growth of a wide variety of microorganisms. (AFNOR, AOAC, BSI, FDA, ISO, NMKL)	500 g
MIMEB1828FA	MacConkey Agar (MAC)	Used for selective and differential isolation of gram-negative bacilli. (BAM, COMPF, SMWW, USP)	500 g
MIMEB1853FA	Eosin-Methylene Blue Agar (EMB) (Levine Agar)	Used for isolation and differentiation of Enterobacteriaceae.	500 g

### 09 Vibrio

Product Code	Product	Description	Qty.
MIMEB1858FA	3% Sodium Chloride Alkaline Peptone Water	Used for enrichment of Vibrio parahaemolyticus.	500 g
MIMEB1859FA	Thiosulfate Citrate Bile Salts Sucrose (TCBS)	Used for selective isolation of enteropathogenic vibrios, especially for Vibrio cholerae and Vibrio parahaemolyticus	500 g

### 10 Other Application

Product Code	Product	Description	Qty.
MIMEB1856FA	Tryptic Soy Broth (TSB) (Soybean Casein Digest)	Used for the cultivation of a wide variety of nonfastidious microorganisms. (USP)	500 g

### 11 Large-Scale Products

Product Code	Product	Description	Qty.
MIMEB1842FA	Buffered Peptone Water	A pre-enrichment medium for use prior to selective enrichment for the isolation of Salmonella spp. from foods. (AFNOR, BSI, IDF, NMKL)	10 KG

