

LIGHT SOURCE CATALOGUE



Product

PROFESSIONAL SUPPLIER OF
INSTRUMENT CORE SPARE PARTS

BIKAI Technology Co.,Ltd.


BIOSZEPARÁCIÓ KFT.
www.bioszeparacio.hu
info@bioszeparacio.hu

BIKAI TECHNOLOGY CO., LTD.

Akihabara Building 2F, 1-11 Kanda Izumi CHO, Chiyoda Ku, Tokyo, Japan

TEL: +81-3-5823-4373

FAX: +81-3-5823-4376

Email: info@bikai.jp

URL: <https://www.bikai.jp>

© Made In Japan

COMPANY PROFILE

BIKAI Technology Co., Ltd. is a professional technology company with manufacturing, R&D and sales centers located in Tokyo, Japan, and an independent operation center in Singapore, responsible for global sales and technical marketing, sales and promotion.

By focusing on the analysis and detection technology on related instruments & equipments and corresponding spares like the light sources (Deuterium lamp, Element lamp, PID lamp, ultraviolet lamp) and supporting products, even to sensors applied to gas detection.

BIKAI has a number of products owned independent intellectual property rights, which are widely used in pharmaceutical, chemical, environmental protection, safety testing and other fields. Provide excellent products and perfect technical support for partners in different countries and regions.



www.bikai.jp

Deuterium lamp and power supply

- ◆ The principle mainly depends on plasma discharge, which means that the deuterium lamp is always in a stable deuterium element (D₂ or heavy hydrogen) arc state.
- ◆ Deuterium lamp emits a continuous spectral range of 180–400nm in ultraviolet band. Because of its stable energy output, deuterium lamp can become a light source of high-precision analysis and measuring instrument. Therefore, deuterium lamps are often used for:
 1. High pressure liquid chromatograph (HPLC- detector)
 2. Thin layer chromatography
 3. High-precision capillary electrophoresis instrument (HPCE)
 4. Atomic Absorption Spectrometer (AAS)
 5. Ultraviolet spectrophotometer (UV-VIS)
 6. Environmental monitoring equipment
 7. Film thickness measurement
 8. Semiconductor inspection
- ◆ The stability of deuterium lamp is not only related to the quality of materials and power supply, but also affected by the manufacturing process of the lamp itself. The range of light wave emitted by deuterium lamp is 180–400nm, in which the range of 190–360nm is often used. In the spectrum band emitted by deuterium lamp, there are three characteristic spectral lines at 486.0 –583.0 –656.1 nm, which are often used to calibrate the theoretical wavelength of instruments. Generally, the measured energy spectrum distribution of deuterium lamp is related to the old and new deuterium lamp, the photomultiplier tube of the instrument, the shining wavelength of the grating, the reflectivity of the optical system and other factors.
- ◆ The glass shell of deuterium lamp sold by our company is mainly made of UV- transparent glass, which has the advantages of high output band (< 250nm) and the material has the characteristics of transmitting wavelengths from 190nm to 400nm, and the material library does not produce ozone. The wavelength below 190nm not only ensures the stability of energy, but also prevents the generation of ozone, and also protects the safety of people and equipment to the maximum extent.
- ◆ In the use of deuterium lamp, it should be noted that:
 1. You can't directly touch the deuterium lamp by hand, because the surface temperature of deuterium lamp is higher than 200C when it works. Oil stains on the deuterium lamp shell will be permanently sintered on the surface of deuterium lamp, which will seriously affect the emission intensity and service life of deuterium lamp.
 2. The radiation of deuterium lamp can't irradiate the skin for a long time, especially the eyes directly, so as to avoid the eyes from being burned.
 3. The service life of deuterium lamp is also related to the quality of power supply.
 4. Deuterium lamps that have not been used for a long time should be lit regularly for 30 minutes before being placed in a dry place.

BIKAI Technology Co., Ltd.

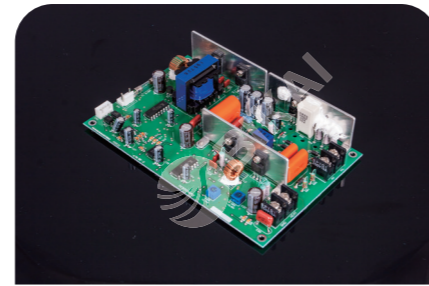
Analytical Instrument Light Source And Consumables



2489/2998(201000281/201000273)
Part No: BK82020281/BK82020273



996/2996(Wat052586)
Part No: BK82022996



2489 POWER SUPPLY HB LAMP
Part No: 700002785



484(Wat080357)
Part No: BK82110484



2487(Was081142)
Part No: BK82112487



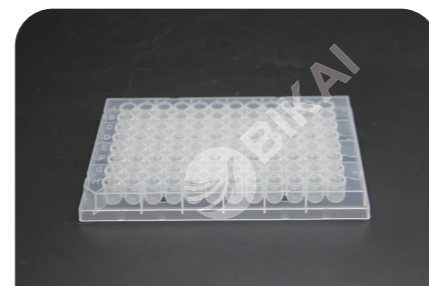
ELSD (279000562)
Part No: BK279000562



PerfrmancePLUS Check Valve
Cartridge 2695 (700000254)
Part No: 110000254



PerformancePLUS Alliance Plunger
Assembly 2695 (wat270959)
Part No: BK60270959



96-well 330 μ L PP Sample
Processing & Storage Plates (AB7096)
Part No: BK-WAT-AB7096

Analytical Instrument Light Source And Consumables



1100/1200/1220/1260DAD
(2140-0820/2140-0813)
Part No: BK82220820



1290(5190-0917)
Part No: BK82220917



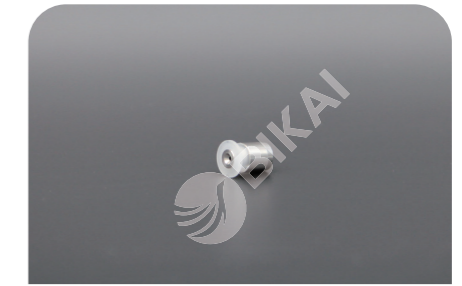
1100/1200/1260VWD
(G1314-60100/G1314-60101)
Part No: BK82010100



Sapphire plunger rod 1220/1260/1290
(5067-4695)
Part No: BK50674695



Active inlet valve core
(5062-8562 400 Bar)
Part No: 1150628562



Active inlet valve core
(G1312-60020 600Bar)
Part No: 11131260020

Analytical Instrument Light Source And Consumables



SPD-10A/20A/15C(228-34016-02)
Part No: BK82000010



LC-2010(228-37401-91)
Part No: BK82002010



LC-2030/2040 (228-63621/228-63621-01)
Part No: BK82002030/BK82002040



M40/LC-2050 (228-63621-02)
Part No: BK82002050



M30A(228-54515)
Part No: BK82054515



LC-40(228-73407)
Part No: BK82073407



UV-3700/3600/2700/2600/2550/2450/
1700/1800/1240/1280(062-65055-05)
Part No: L6380



Xenon lamp
Part No: BK8120000(*)

Analytical Instrument Light Source And Consumables



UltiMate 3000VWD(6074.1110)
Part No: BK82226999



Vanquish VWD/DAD(6077.1110/6083.1111)
Part No: BK60771110/BK60831111



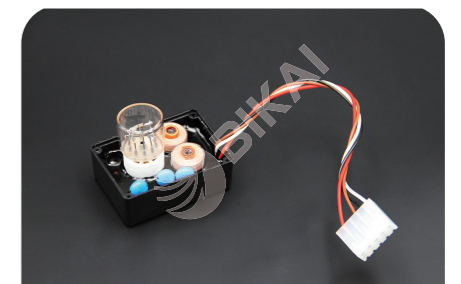
ICE 3500(9423-420-30004)
Part No: BK82024204



Vanquish VH-D1(6083.1110)
Part No: BK60831110



3000VWD(6074.2000/6083.2000)
Part No: BKWL6074



EV300 QUIET XENON LAMP UPGRADE S
Part No: BK81200300



DR5000/6000 ALL/DU730(A23792)
Part No: BK82205000



DR5000/DR6000 ALL (A23778)
Part No: BK43023778

BIKAI Technology Co., Ltd.

Analytical Instrument Light Source And Consumables

Analytical Instrument Light Source And Consumables



LC-VWD (890-2430/892-2550)
Part No: BK81022430



primaide VWD
(2J1-1500/891-2733/239-0354)
Part No: BK81021500



primaide DAD (2J1-1500/893-4755)
Part No: BK82224755



EA5000
Part No: 11-0402-001-21



SPECORD PLUS
Part No: 820-60274-C



SPECORD 2xx (PLUS)/ 50 (PLUS)/ 40/30,
SPECORD S 600, S 100, SPEKOL 1200
Part No: 820-60021-0



Tungsten lamp WL (885-1200)
Part No: 43235005



Xenon lamp
Part No: BK8120000(*)



SPECORD50/200/210/250 PLUS
Part No: 820-60267-P



AAS (10-405-502)
Part No: BK80405502



Pen-Ray mercury lamp
Part No: BK3000-series



970B/975B, 1570/1575, 2070/2075 (5330-0091B)
Part No: BK82000091



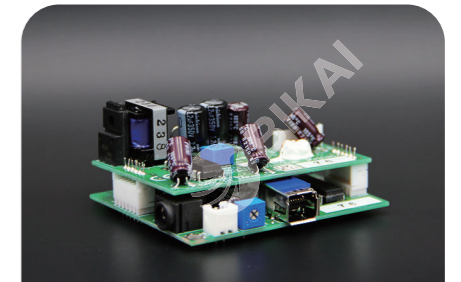
970A/975A (5330-0092)
Part No: BK82000092



iCE3proteinsimple CIEF (102-235)
Part No: BK82012235



Maurice
Part No: L10671D

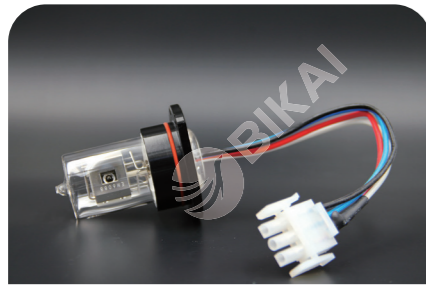


Maurice Power Supply
Part No: L10671P

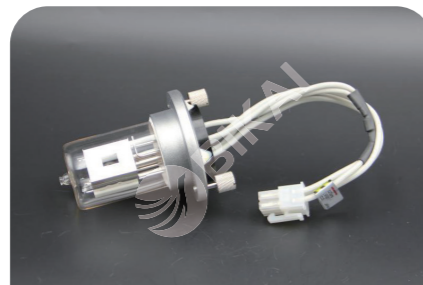
BIKAI Technology Co., Ltd.

Analytical Instrument Light Source And Consumables

CE consumables



MDQ Series/PA 800/PA 800 plus
(144- 667)
Part No: BK82220251



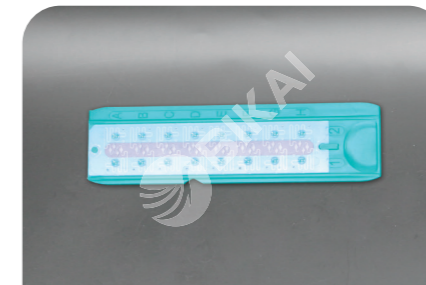
CE 8800(5065163)
Part No: BK85065163



CE-SDS Gel Buffer (A30341)
Part No: A14303



Black Microfluidic Plate (701-2001)
Part No: BK-1002-107



Green Microfluidic Plate (701-2007)
Part No: BK-7002-107



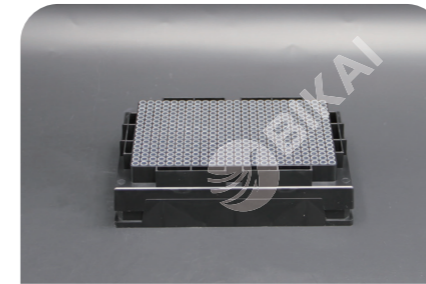
10kDa Internal Standard (A26487)
Part No: A78462



PDA Fiber Optic Y-cable (144094)
Part No: BK-490441



UV Fiber Optic Cable (144093)
Part No: BK-390441



25 µ L Pipette Tips Sterile (6001640)
Part No: BK-WAT-S483N-S



Cell Counting Slide (CHT4-series/CP2-001)
Part No: BK-CHT4-series/BK-CP2-001



Labchip Series (760524/CLS-series)
Part No: BK-425067/BK-CLS-series



UNIVERSAL VIAL CAPS (A62250)
Part No: A05226



VIAL COMMON MOLDED (A62251)
Part No: A15226



PCR VIALS (144709)
Part No: N8010533

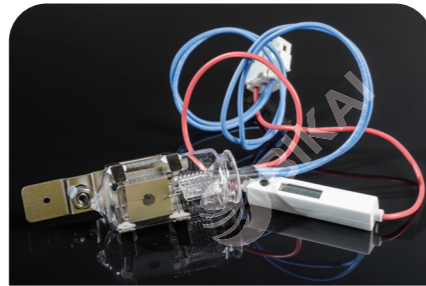


Part No: BK81218008

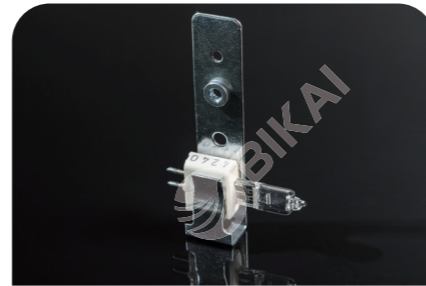
Analytical Instrument Light Source And Consumables



Series 200 UV/vis (N2900484)
Part No: BK81020616



Lambda Series (L6022728)
Part No: L6022728



Series 200 UV/vis (B0114620)
Part No: B0114620



365 Series N4101036
Part No: BK82221036



365 Series N4101037
Part No: BK82221037



Protein Express Assay LabChip
(760499)
Part No: BK-994067



UV1800/1900
Part No: L6302-40



T9
Part No: L6301-50

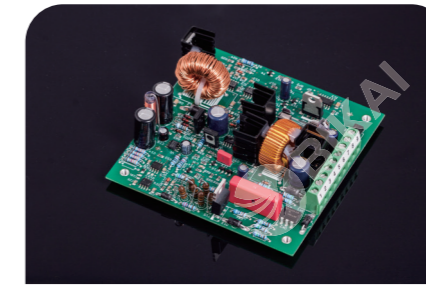


T6
Part No: L6312-53

Analytical Instrument Light Source And Consumables



XD5565-10J
Part No: 80133124



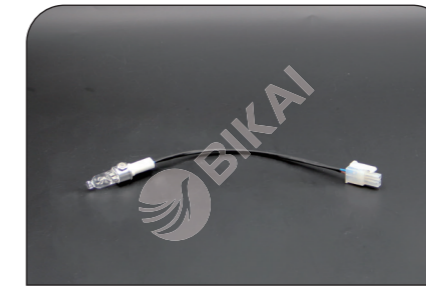
Part No: 80000252



RF75Series
Part No: BK82118001



Part No: BK81220011



Part No: BK-81220011-H



Part No: BK82000076



S-3100
Part No: BK80139864



S-3100
Part No: BK63000001



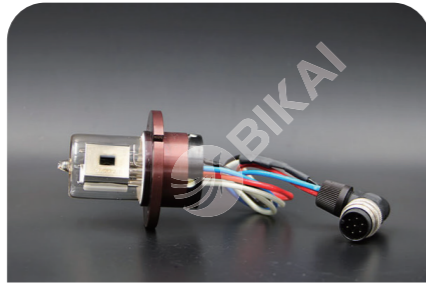
943-TGX H2S/SO2 (L6311-50)
Part No: L6311-50

Analytical Instrument Light Source And Consumables

Analytical Instrument Light Source And Consumables



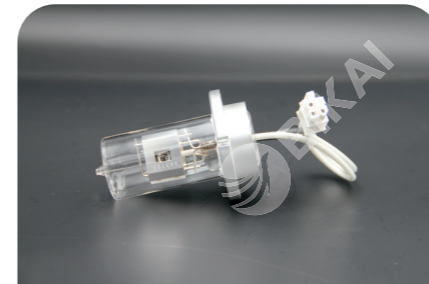
118/119/151/152/15(2026-3-10-100326)
Part No: BK81229156



159 (14002021)
Part No: BK81229159



Part No: L6302-53



Part No: L6565-57



Part No: OPLA-I20



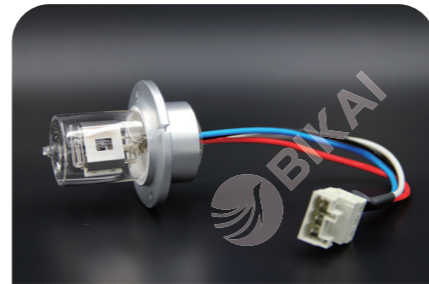
Part No: BK82023000



Interchim(SD1191-01J)
Part No: BK82000075



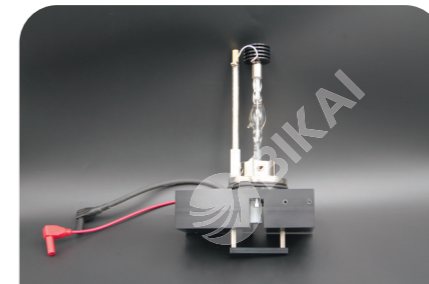
selekt
Part No: BK82000074



Part No: BK82010256



LCUV-100
Part No: BK82010110



Chirscan V100 (AP/XE/R150)
Part No: BK-V100-R150



Element lamp
Part No: L233-series



ALL
Part No: BK82024071



2520/2550
Part No: BK82012520



Part No: BK82065651



module 5W
ALL
Part No: BK50013650



module 2W
ALL
Part No: BK50013651



PID
PKS106/PKR106
PKR106-6-14